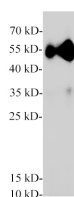


## Pancreatic lipase/PTL Polyclonal Antibody

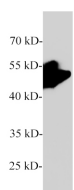
|                     |   |                   |        |
|---------------------|---|-------------------|--------|
| <b>Catalog No.</b>  | E-AB-40636                                  | <b>Reactivity</b> | M,R    |
| <b>Storage</b>      | Store at -20°C. Avoid freeze / thaw cycles. | <b>Host</b>       | Rabbit |
| <b>Applications</b> | WB  | <b>Isotype</b>    | IgG    |

**Note:** Centrifuge before opening to ensure complete recovery of vial contents.

### Images



Western blot of Mouse pancreas with anti-Pancreatic lipase polyclonal antibody at 1:2000 dilution.



Western blot of Rat pancreas with Pancreatic lipase polyclonal antibody at 1:2000 dilution.

### Immunogen Information

|                  |  |
|------------------|--|
| <b>Immunogen</b> | Recombinant Human Pancreatic lipase protein expressed by E.coli. |
| <b>GeneID</b>    | 5406   |
| <b>Swissprot</b> | P16233   |
| <b>Synonyms</b>  | Pancreatic triacylglycerol lipase,PL,PTL,PNLIP                   |

### Product Information

|                      |   |
|----------------------|---|
| <b>Calculated MW</b> | 51 kDa  |
| <b>Observed MW</b>   | 51 kDa  |
| <b>Buffer</b>        | PBS with 0.02% sodium azide,50% glycerol,pH 7.4 |
| <b>Purify</b>        | Antigen Affinity Purification                   |
| <b>Dilution</b>      | WB 1:1000-1:2000                                |

### Background

Plays an important role in fat metabolism. It preferentially splits the esters of long-chain fatty acids at positions 1 and 3,producing mainly 2-monoacylglycerol and free fatty acids,and shows considerably higher activity against insoluble emulsified substrates than against soluble ones.

#### For Research Use Only

Thank you for your recent purchase.  
 If you would like to learn more about antibodies,please visit [www.elabscience.com](http://www.elabscience.com).

**Focus on your research  
 Service for life science**

Applications:WB-Western Blot IHC-Immunohistochemistry IF-Immunofluorescence IP-Immunoprecipitation FC-Flow cytometry ChIP-Chromatin Immunoprecipitation Reactivity: H-Human R-Rat M-Mouse Mk-Monkey Dg-Dog Ch-Chicken Hm-Hamster Rb-Rabbit Sh-Sheep Pg-Pig Z-Zebrafish X-Xenopus C-Cow.