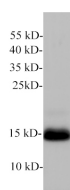


Lutropin subunit beta/LHB Polyclonal Antibody

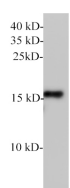
Catalog No.	E-AB-40638	Reactivity	M,R
Storage	Store at -20°C. Avoid freeze / thaw cycles.	Host	Rabbit
Applications	WB	Isotype	IgG

Note: Centrifuge before opening to ensure complete recovery of vial contents.

Images



Western blot of Mouse pancreas with anti-Lutropin subunit beta polyclonal antibody at 1:1000 dilution.



Western blot of Rat pituitary with Lutropin subunit beta polyclonal antibody at 1:1000 dilution.

Immunogen Information

Immunogen	Recombinant Mouse LHB protein expressed by E.coli.
Swissprot	O09108
Synonyms	LH-B,LSH-B,LSH-beta,Lhb

Product Information

Calculated MW	15 kDa
Observed MW	15 kDa
Buffer	PBS with 0.02% sodium azide,50% glycerol,pH 7.4
Purify	Antigen Affinity Purification
Dilution	WB 1:500-1:1000

Background

Luteinizing Hormone (LH) is a 42 kDa heterodimer belonging to the glycoprotein hormone family. It is composed of noncovalently linked glycosylated alpha and beta chains. The alpha subunit (CG alpha) is also a component of Follicle-Stimulating Hormone (FSH),Thyroid-Stimulating Hormone,and Chorionic Gonadotropin. The unique beta subunit confers the protein's specific biological action and is responsible for the interaction with its receptor.

For Research Use Only

Thank you for your recent purchase.
 If you would like to learn more about antibodies,please visit www.elabscience.com.

**Focus on your research
 Service for life science**

Applications:WB-Western Blot IHC-Immunohistochemistry IF-Immunofluorescence IP-Immunoprecipitation FC-Flow cytometry ChIP-Chromatin Immunoprecipitation Reactivity: H-Human R-Rat M-Mouse Mk-Monkey Dg-Dog Ch-Chicken Hm-Hamster Rb-Rabbit Sh-Sheep Pg-Pig Z-Zebrafish X-Xenopus C-Cow.