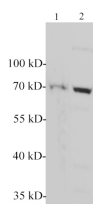


NF2 / Merlin Polyclonal Antibody

Catalog No.	E-AB-40642	Reactivity	H,M,R
Storage	Store at -20°C. Avoid freeze / thaw cycles.	Host	Rabbit
Applications	WB	Isotype	IgG

Note: Centrifuge before opening to ensure complete recovery of vial contents.

Images



Western blotting with anti-NF2 polyclonal Antibody at dilution of 1:1000. Lane 1: Mouse brain lysates, lane 2: Rat brain lysate.



Western blot of PC-3 cell lysate with NF2 polyclonal antibody at 1:1000 dilution.

Immunogen Information

Immunogen	Recombinant Human NF2 protein expressed by E.coli.
GeneID	4771
Swissprot	P35240
Synonyms	ACN,BANF,Merlin,Neurofibromin 2,NF2,SCH,Schwannomerlin

Product Information

Calculated MW	70 kDa
Observed MW	66-70 kDa
Buffer	PBS with 0.02% sodium azide,50% glycerol,pH 7.4
Purify	Antigen Affinity Purification
Dilution	WB 1:500-1:1000

Background

Probable regulator of the Hippo/SWH (Sav/Wts/Hpo) signaling pathway,a signaling pathway that plays a pivotal role in tumor suppression by restricting proliferation and promoting apoptosis. Along with WWC1 can synergistically induce the phosphorylation of LATS1 and LATS2 and can probably function in the regulation of the Hippo/SWH (Sav/Wts/Hpo) signaling pathway. May act as a membrane stabilizing protein. May inhibit PI3 kinase by binding to AGAP2 and impairing its stimulating activity. Suppresses cell proliferation and tumorigenesis by inhibiting the CUL4A-RBX1-DDB1-VprBP/DCAF1 E3 ubiquitin-protein ligase complex.

For Research Use Only

Thank you for your recent purchase.
 If you would like to learn more about antibodies,please visit www.elabscience.com.

**Focus on your research
 Service for life science**

Applications:WB-Western Blot IHC-Immunohistochemistry IF-Immunofluorescence IP-Immunoprecipitation FC-Flow cytometry ChIP-Chromatin Immunoprecipitation Reactivity: H-Human R-Rat M-Mouse Mk-Monkey Dg-Dog Ch-Chicken Hm-Hamster Rb-Rabbit Sh-Sheep Pg-Pig Z-Zebrafish X-Xenopus C-Cow.