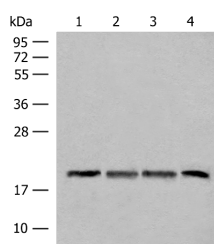


SEC11A Polyclonal Antibody

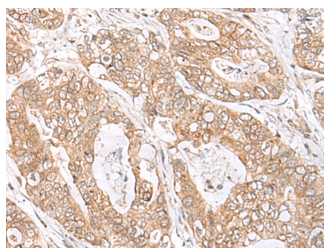
Catalog No.	E-AB-52703	Reactivity	H,M,R
Storage	Store at -20°C. Avoid freeze / thaw cycles.	Host	Rabbit
Applications	WB,IHC,ELISA	Isotype	IgG

Note: Centrifuge before opening to ensure complete recovery of vial contents.

Images



Western blot analysis of TM4 HEPG2 and A549 cell Mouse liver tissue lysates using SEC11A Polyclonal Antibody at dilution of 1:300



Immunohistochemistry of paraffin-embedded Human gastric cancer tissue using SEC11A Polyclonal Antibody at dilution of 1:45(×200)

Immunogen Information

Immunogen	Fusion protein of human SEC11A
Gene Accession	BC014508
Swissprot	P67812
Synonyms	SC11A,SEC11A,SEC11L1,sid2895,SPase 18 kDa subunit,SPC18,SPCS4A

Product Information

Calculated MW	21 kDa
Observed MW	Refer to figures
Buffer	PBS with 0.05% NaN ₃ and 40% Glycerol,pH7.4
Purify	Antigen affinity purification
Dilution	WB 1:500-1:2000, IHC 1:40-1:200, ELISA 1:5000-1:10000

Background

This gene encodes a member of the peptidase S26B family. The encoded protein is an 18kDa subunit of the signal peptidase complex and has been linked to cell migration and invasion, gastric cancer and lymph node metastasis. Alternative splicing results in multiple transcript variants. A related pseudogene has been identified on chromosome 8.

For Research Use Only

Thank you for your recent purchase.
 If you would like to learn more about antibodies, please visit www.elabscience.com.

**Focus on your research
 Service for life science**

Applications:WB-Western Blot IHC-Immunohistochemistry IF-Immunofluorescence IP-Immunoprecipitation FC-Flow cytometry ChIP-Chromatin Immunoprecipitation Reactivity: H-Human R-Rat M-Mouse Mk-Monkey Dg-Dog Ch-Chicken Hm-Hamster Rb-Rabbit Sh-Sheep Pg-Pig Z-Zebrafish X-Xenopus C-Cow.