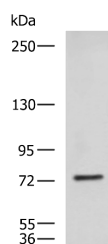


KIF2A Polyclonal Antibody

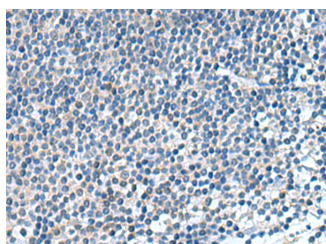
| | | | |
|---------------------|---|-------------------|--------|
| Catalog No. | E-AB-53005 | Reactivity | H,M,R |
| Storage | Store at -20°C. Avoid freeze / thaw cycles. | Host | Rabbit |
| Applications | WB,IHC,ELISA | Isotype | IgG |

Note: Centrifuge before opening to ensure complete recovery of vial contents.

Images



Western blot analysis of NIH/3T3 cell lysate using KIF2A Polyclonal Antibody at dilution of 1:850



Immunohistochemistry of paraffin-embedded Human tonsil tissue using KIF2A Polyclonal Antibody at dilution of 1:65(×200)

Immunogen Information

| | |
|-----------------------|---|
| Immunogen | Fusion protein of human KIF2A |
| Gene Accession | BC031828 |
| Swissprot | O00139 |
| Synonyms | CDCBM3, HK2, KIF2, KIF2A, KIF2A, Kinesin 2, Kinesin-like protein KIF2A, KNS2, M Kinesin |

Product Information

| | |
|----------------------|---|
| Calculated MW | 80 kDa |
| Observed MW | Refer to figures |
| Buffer | PBS with 0.05% NaN ₃ and 40% Glycerol, pH7.4 |
| Purify | Antigen affinity purification |
| Dilution | WB 1:500-1:2000, IHC 1:50-1:100, ELISA 1:5000-1:10000 |

Background

The protein encoded by this gene is a plus end-directed motor required for normal mitotic progression. The encoded protein is required for normal spindle activity during mitosis and is necessary for normal brain development. Several transcript variants encoding different isoforms have been found for this gene.

For Research Use Only

Thank you for your recent purchase.
 If you would like to learn more about antibodies, please visit www.elabscience.com.

**Focus on your research
 Service for life science**

Applications: WB-Western Blot IHC-Immunohistochemistry IF-Immunofluorescence IP-Immunoprecipitation FC-Flow cytometry ChIP-Chromatin Immunoprecipitation Reactivity: H-Human R-Rat M-Mouse Mk-Monkey Dg-Dog Ch-Chicken Hm-Hamster Rb-Rabbit Sh-Sheep Pg-Pig Z-Zebrafish X-Xenopus C-Cow.