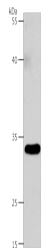


## VGLL1 Polyclonal Antibody

<b>Catalog No.</b>	E-AB-53198	<b>Reactivity</b>	H
<b>Storage</b>	Store at -20°C. Avoid freeze / thaw cycles.	<b>Host</b>	Rabbit
<b>Applications</b>	WB,ELISA	<b>Isotype</b>	IgG

**Note:** Centrifuge before opening to ensure complete recovery of vial contents.

### Images



Western blot analysis of 293T cells using VGLL1 Polyclonal Antibody at dilution of 1:4600

### Immunogen Information

<b>Immunogen</b>	Synthetic peptide of human VGLL1
<b>Gene Accession</b>	NP057351
<b>Swissprot</b>	Q99990
<b>Synonyms</b>	Protein TONDU,TDU,TONDU,Vestigial like 1,,Vgl-1,VGL1,Vgl1,VGLL1

### Product Information

<b>Calculated MW</b>	29 kDa
<b>Observed MW</b>	Refer to figures
<b>Buffer</b>	PBS with 0.05% NaN <sub>3</sub> and 40% Glycerol,pH7.4
<b>Purify</b>	Antigen affinity purification
<b>Dilution</b>	WB 1:2000-1:10000 ELISA 1:2000-1:20000

### Background

The protein encoded by this gene binds proteins of the TEA domain family of transcription factors (TEFs) through the Vg (vestigial) homology region found in its N-terminus. It may thus function as a specific coactivator for the mammalian TEFs. TDU interacted directly with the TEA domain family member, TEF1, and deletion of the Vg homology region abolished the interaction. The TDU-TEF1 dimer activated a reporter plasmid, and expression of TDU in *Drosophila* rescued loss of Vg function. The interaction was stronger in cardiac myocytes, suggesting a myocyte-specific factor may participate in the interaction. Vgl1 was weakly active in driving expression of a reporter gene from the mouse skeletal muscle alpha-actin promoter, and Vgl1 could partially reverse the inhibitory effect of TEF1 in this assay.

#### For Research Use Only

Thank you for your recent purchase.  
 If you would like to learn more about antibodies, please visit [www.elabscience.com](http://www.elabscience.com).

**Focus on your research  
 Service for life science**

Applications:WB-Western Blot IHC-Immunohistochemistry IF-Immunofluorescence IP-Immunoprecipitation FC-Flow cytometry ChIP-Chromatin Immunoprecipitation Reactivity: H-Human R-Rat M-Mouse Mk-Monkey Dg-Dog Ch-Chicken Hm-Hamster Rb-Rabbit Sh-Sheep Pg-Pig Z-Zebrafish X-Xenopus C-Cow.