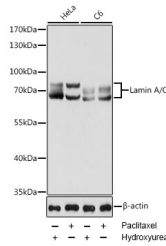


Lamin A/C Polyclonal Antibody

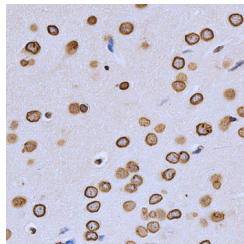
| | | | |
|---------------------|---|-------------------|--------|
| Catalog No. | E-AB-60043 | Reactivity | H,M,R |
| Storage | Store at -20°C. Avoid freeze / thaw cycles. | Host | Rabbit |
| Applications | WB,IHC,IF | Isotype | IgG |

Note: Centrifuge before opening to ensure complete recovery of vial contents.

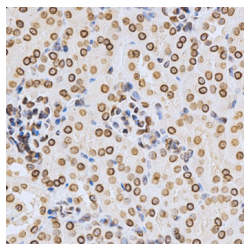
Images



Western blot analysis of extracts of various cell lines using Lamin A/C Polyclonal Antibody at dilution of 1:1000. HeLa cells were treated by Hydroxyurea (4 mM) at 37°C for 20 hours or treated by Paclitaxel (100 nM/ml) at 37°C for 20 hours. C6 cells were treated by Hydroxyurea (4 mM) at 37°C for 20 hours or treated by Paclitaxel (100 nM) at 37°C for 20 hours.



Immunohistochemistry of paraffin-embedded Rat brain using Lamin A/C Polyclonal Antibody at dilution of 1:200 (40x lens).



Immunohistochemistry of paraffin-

Immunogen Information

| | |
|------------------|--|
| Immunogen | Recombinant fusion protein of human Lamin C (NP_005563.1). |
| GeneID | 4000 |
| Swissprot | P02545 |
| Synonyms | LMNA,CDCD1,CDDC,CMD1A,CMT2B1,EMD2,FP L,FPLD,FPLD2,LMN1,LMNC,LMNL1,MADA,PRO 1 |

Product Information

| | |
|----------------------|---|
| Calculated MW | 62-74kDa |
| Observed MW | 69kDa/72kDa |
| Buffer | PBS with 0.02% sodium azide, 50% glycerol, pH7.3. |
| Purify | Affinity purification |
| Dilution | WB 1:500-1:2000 IHC 1:50-1:200 IF 1:50-1:200 |

Background

The nuclear lamina consists of a two-dimensional matrix of proteins located next to the inner nuclear membrane. The lamin family of proteins make up the matrix and are highly conserved in evolution. During mitosis, the lamina matrix is reversibly disassembled as the lamin proteins are phosphorylated. Lamin proteins are thought to be involved in nuclear stability, chromatin structure and gene expression. Vertebrate lamins consist of two types, A and B. Alternative splicing results in multiple transcript variants. Mutations in this gene lead to several diseases: Emery-Dreifuss muscular dystrophy, familial partial lipodystrophy, limb girdle muscular dystrophy, dilated cardiomyopathy, Charcot-Marie-Tooth disease, and Hutchinson-Gilford progeria syndrome.

For Research Use Only

Thank you for your recent purchase.
 If you would like to learn more about antibodies, please visit www.elabscience.com.

**Focus on your research
 Service for life science**

Applications:WB-Western Blot IHC-Immunohistochemistry IF-Immunofluorescence IP-Immunoprecipitation FC-Flow cytometry ChIP-Chromatin Immunoprecipitation Reactivity: H-Human R-Rat M-Mouse Mk-Monkey Dg-Dog Ch-Chicken Hm-Hamster Rb-Rabbit Sh-Sheep Pg-Pig Z-Zebrafish X-Xenopus C-Cow.

embedded Mouse kidney using Lamin
A/C Polyclonal Antibody at dilution of
1:200 (40x lens).

For Research Use Only

Thank you for your recent purchase.

If you would like to learn more about antibodies, please visit www.elabscience.com.

**Focus on your research
Service for life science**

Applications:WB-Western Blot IHC-Immunohistochemistry IF-Immunofluorescence IP-Immunoprecipitation FC-Flow cytometry ChIP-
Chromatin Immunoprecipitation Reactivity: H-Human R-Rat M-Mouse Mk-Monkey Dg-Dog Ch-Chicken Hm-Hamster Rb-Rabbit Sh-
Sheep Pg-Pig Z-Zebrafish X-Xenopus C-Cow.