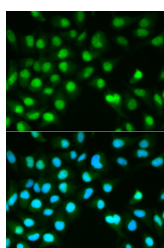


## PPP3CA Polyclonal Antibody

<b>Catalog No.</b>	E-AB-60163	<b>Reactivity</b>	H,M
<b>Storage</b>	Store at -20°C. Avoid freeze / thaw cycles.	<b>Host</b>	Rabbit
<b>Applications</b>	IF	<b>Isotype</b>	IgG

**Note:** Centrifuge before opening to ensure complete recovery of vial contents.

### Images



Immunofluorescence analysis of HeLa cells using PPP3CA Polyclonal Antibody

### Immunogen Information

<b>Immunogen</b>	Recombinant fusion protein of human PPP3CA (NP_001124163.1).
<b>GeneID</b>	5530
<b>Swissprot</b>	Q08209
<b>Synonyms</b>	PPP3CA,CALN,CALNA,CALNA1,CCN1,CNA1,PP P2B

### Product Information

<b>Buffer</b>	PBS with 0.02% sodium azide, 50% glycerol, pH7.3.
<b>Purify</b>	Affinity purification
<b>Dilution</b>	IF 1:50-1:200

### Background

Protein phosphatase 3, catalytic subunit, alpha isoform is a protein that in humans is encoded by the PPP3CA gene. Calcium-dependent, calmodulin-stimulated protein phosphatase. Many of the substrates contain a PxIxIT motif. This subunit may have a role in the calmodulin activation of calcineurin. Dephosphorylates DNM1L, HSPB1 and SSH1.

#### For Research Use Only

Thank you for your recent purchase.  
 If you would like to learn more about antibodies, please visit [www.elabscience.com](http://www.elabscience.com).

**Focus on your research  
 Service for life science**

Applications: WB-Western Blot IHC-Immunohistochemistry IF-Immunofluorescence IP-Immunoprecipitation FC-Flow cytometry ChIP-Chromatin Immunoprecipitation Reactivity: H-Human R-Rat M-Mouse Mk-Monkey Dg-Dog Ch-Chicken Hm-Hamster Rb-Rabbit Sh-Sheep Pg-Pig Z-Zebrafish X-Xenopus C-Cow.