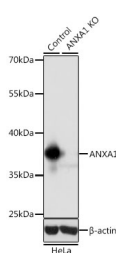


(KO Validated) ANXA1 Polyclonal Antibody

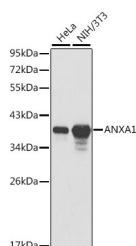
Catalog No.	E-AB-60192	Reactivity	H,M
Storage	Store at -20°C. Avoid freeze / thaw cycles.	Host	Rabbit
Applications	WB,IHC,IF	Isotype	IgG

Note: Centrifuge before opening to ensure complete recovery of vial contents.

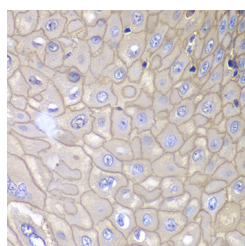
Images



Western blot analysis of extracts from normal (control) and ANXA1 knockout (KO) HeLa cells using ANXA1 Polyclonal Antibody at dilution of 1:1000.



Western blot analysis of extracts of various cell lines using ANXA1 Polyclonal Antibody.



Immunohistochemistry of paraffin-embedded Human esophagus using ANXA1 Polyclonal Antibody at dilution of 1:100 (40x lens).

Immunogen Information

Immunogen	Recombinant fusion protein of human ANXA1 (NP_000691.1).
GeneID	301
Swissprot	P04083
Synonyms	ANXA1,ANX1,LPC1

Product Information

Calculated MW	38kDa
Observed MW	38kDa
Buffer	PBS with 0.02% sodium azide, 50% glycerol, pH7.3.
Purify	Affinity purification
Dilution	WB 1:500-1:2000 IHC 1:50-1:200 IF 1:50-1:200

Background

This gene encodes a membrane-localized protein that binds phospholipids. This protein inhibits phospholipase A2 and has anti-inflammatory activity. Loss of function or expression of this gene has been detected in multiple tumors.

For Research Use Only

Thank you for your recent purchase.
 If you would like to learn more about antibodies, please visit www.elabscience.com.

**Focus on your research
 Service for life science**

Applications:WB-Western Blot IHC-Immunohistochemistry IF-Immunofluorescence IP-Immunoprecipitation FC-Flow cytometry ChIP-Chromatin Immunoprecipitation Reactivity: H-Human R-Rat M-Mouse Mk-Monkey Dg-Dog Ch-Chicken Hm-Hamster Rb-Rabbit Sh-Sheep Pg-Pig Z-Zebrafish X-Xenopus C-Cow.