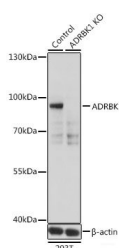


(KO Validated) ADRBK1 Polyclonal Antibody

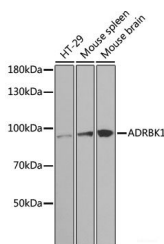
Catalog No.	E-AB-60399	Reactivity	H,M,R
Storage	Store at -20°C. Avoid freeze / thaw cycles.	Host	Rabbit
Applications	WB,IHC	Isotype	IgG

Note: Centrifuge before opening to ensure complete recovery of vial contents.

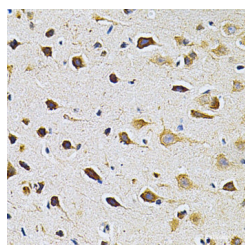
Images



Western blot analysis of extracts from normal (control) and ADRBK1 knockout (KO) 293T cells using ADRBK1 Polyclonal Antibody at dilution of 1:500.



Western blot analysis of extracts of various cell lines using ADRBK1 Polyclonal Antibody at dilution of 1:1000.



Immunohistochemistry of paraffin-embedded Rat brain using ADRBK1 Polyclonal Antibody at dilution of 1:200 (40x lens).

Immunogen Information

Immunogen	Recombinant fusion protein of human ADRBK1 (NP_001610.2).
GeneID	156
Swissprot	P25098
Synonyms	GRK2,ADRBK1,BARK1,BETA-ARK1

Product Information

Calculated MW	79kDa
Observed MW	80kDa
Buffer	PBS with 0.02% sodium azide, 50% glycerol, pH7.3.
Purify	Affinity purification
Dilution	WB 1:500-1:2000 IHC 1:50-1:200

Background

The product of this gene phosphorylates the beta-2-adrenergic receptor and appears to mediate agonist-specific desensitization observed at high agonist concentrations. This protein is an ubiquitous cytosolic enzyme that specifically phosphorylates the activated form of the beta-adrenergic and related G-protein-coupled receptors. Abnormal coupling of beta-adrenergic receptor to G protein is involved in the pathogenesis of the failing heart.

For Research Use Only

Thank you for your recent purchase.
 If you would like to learn more about antibodies, please visit www.elabscience.com.

Focus on your research
Service for life science

Applications:WB-Western Blot IHC-Immunohistochemistry IF-Immunofluorescence IP-Immunoprecipitation FC-Flow cytometry ChIP-Chromatin Immunoprecipitation Reactivity: H-Human R-Rat M-Mouse Mk-Monkey Dg-Dog Ch-Chicken Hm-Hamster Rb-Rabbit Sh-Sheep Pg-Pig Z-Zebrafish X-Xenopus C-Cow.