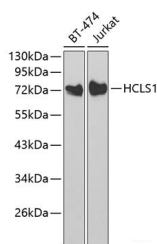


HCLS1 Polyclonal Antibody

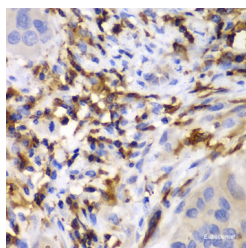
Catalog No.	E-AB-60652	Reactivity	H,M
Storage	Store at -20°C. Avoid freeze / thaw cycles.	Host	Rabbit
Applications	WB,IHC	Isotype	IgG

Note: Centrifuge before opening to ensure complete recovery of vial contents.

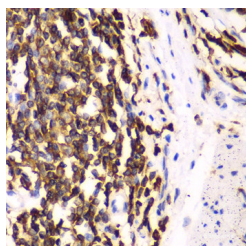
Images



Western blot analysis of extracts of various cell lines using HCLS1 Polyclonal Antibody at dilution of 1:1000.



Immunohistochemistry of paraffin-embedded Human liver cancer using HCLS1 Polyclonal Antibody at dilution of 1:100 (40x lens).



Immunohistochemistry of paraffin-embedded Human esophagus using HCLS1 Polyclonal Antibody at dilution of 1:100 (40x lens).

Immunogen Information

Immunogen	Recombinant fusion protein of human HCLS1 (NP_005326.2).
GeneID	3059
Swissprot	P14317
Synonyms	HCLS1,CTTNL,HS1,lckBP1,p75

Product Information

Calculated MW	24kDa/54kDa
Observed MW	72kDa
Buffer	PBS with 0.02% sodium azide, 50% glycerol, pH7.3.
Purify	Affinity purification
Dilution	WB 1:500-1:2000 IHC 1:50-1:200

Background

HCLS1 (Hematopoietic Cell-Specific Lyn Substrate 1) is a Protein Coding gene. Diseases associated with HCLS1 include Spherocytosis, Type 1. Among its related pathways are Pathogenic Escherichia coli infection and Immune response Fc epsilon RI pathway. Gene Ontology (GO) annotations related to this gene include protein kinase binding. An important paralog of this gene is CTTN.

For Research Use Only

Thank you for your recent purchase.
 If you would like to learn more about antibodies, please visit www.elabscience.com.

**Focus on your research
 Service for life science**

Applications:WB-Western Blot IHC-Immunohistochemistry IF-Immunofluorescence IP-Immunoprecipitation FC-Flow cytometry ChIP-Chromatin Immunoprecipitation Reactivity: H-Human R-Rat M-Mouse Mk-Monkey Dg-Dog Ch-Chicken Hm-Hamster Rb-Rabbit Sh-Sheep Pg-Pig Z-Zebrafish X-Xenopus C-Cow.