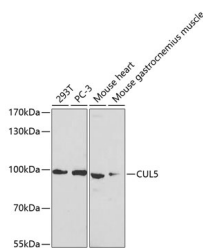


## CUL5 Polyclonal Antibody

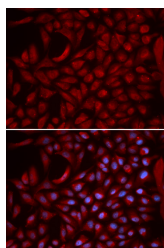
<b>Catalog No.</b>	E-AB-60932	<b>Reactivity</b>	H,M
<b>Storage</b>	Store at -20°C. Avoid freeze / thaw cycles.	<b>Host</b>	Rabbit
<b>Applications</b>	WB,IF	<b>Isotype</b>	IgG

**Note:** Centrifuge before opening to ensure complete recovery of vial contents.

### Images



Western blot analysis of extracts of various cell lines using CUL5 Polyclonal Antibody at dilution of 1:1000.



Immunofluorescence analysis of U2OS cells using CUL5 Polyclonal Antibody

### Immunogen Information

<b>Immunogen</b>	Recombinant fusion protein of human CUL5 (NP_003469.2).
<b>GeneID</b>	8065
<b>Swissprot</b>	Q93034
<b>Synonyms</b>	CUL5,CUL-5,VACM-1,VACM1,cullin-5

### Product Information

<b>Calculated MW</b>	90kDa
<b>Observed MW</b>	91kDa
<b>Buffer</b>	PBS with 0.02% sodium azide, 50% glycerol, pH7.3.
<b>Purify</b>	Affinity purification
<b>Dilution</b>	WB 1:500-1:2000 IF 1:50-1:200

### Background

CUL5 (Cullin 5) is a Protein Coding gene. Among its related pathways are Innate Immune System and CDK-mediated phosphorylation and removal of Cdc6. Gene Ontology (GO) annotations related to this gene include protein heterodimerization activity and ubiquitin protein ligase binding. An important paralog of this gene is CUL1.

#### For Research Use Only

Thank you for your recent purchase.  
 If you would like to learn more about antibodies, please visit [www.elabscience.com](http://www.elabscience.com).

**Focus on your research  
 Service for life science**

Applications: WB-Western Blot IHC-Immunohistochemistry IF-Immunofluorescence IP-Immunoprecipitation FC-Flow cytometry ChIP-Chromatin Immunoprecipitation Reactivity: H-Human R-Rat M-Mouse Mk-Monkey Dg-Dog Ch-Chicken Hm-Hamster Rb-Rabbit Sh-Sheep Pg-Pig Z-Zebrafish X-Xenopus C-Cow.