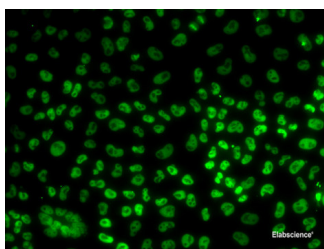


## BUB3 Polyclonal Antibody

|                     |   |                   |        |
|---------------------|---|-------------------|--------|
| <b>Catalog No.</b>  | E-AB-61197                                  | <b>Reactivity</b> | H,M,R  |
| <b>Storage</b>      | Store at -20°C. Avoid freeze / thaw cycles. | <b>Host</b>       | Rabbit |
| <b>Applications</b> | IF  | <b>Isotype</b>    | IgG    |

**Note:** Centrifuge before opening to ensure complete recovery of vial contents.

### Images



Immunofluorescence analysis of U2OS cells using BUB3 Polyclonal Antibody

### Immunogen Information

|                  |   |
|------------------|---|
| <b>Immunogen</b> | Recombinant fusion protein of human BUB3 (NP_004716.1). |
| <b>GeneID</b>    | 9184  |
| <b>Swissprot</b> | O43684  |
| <b>Synonyms</b>  | BUB3,BUB3L,hBUB3  |

### Product Information

|                 |   |
|-----------------|---|
| <b>Buffer</b>   | PBS with 0.02% sodium azide, 50% glycerol, pH7.3. |
| <b>Purify</b>   | Affinity purification                             |
| <b>Dilution</b> | IF 1:50-1:200                                     |

### Background

This gene encodes a protein involved in spindle checkpoint function. The encoded protein contains four WD repeat domains and has sequence similarity with the yeast BUB3 protein. Alternate transcriptional splice variants, encoding different isoforms, have been characterized.

#### For Research Use Only

Thank you for your recent purchase.  
 If you would like to learn more about antibodies, please visit [www.elabscience.com](http://www.elabscience.com).

**Focus on your research  
 Service for life science**

Applications:WB-Western Blot IHC-Immunohistochemistry IF-Immunofluorescence IP-Immunoprecipitation FC-Flow cytometry ChIP-Chromatin Immunoprecipitation Reactivity: H-Human R-Rat M-Mouse Mk-Monkey Dg-Dog Ch-Chicken Hm-Hamster Rb-Rabbit Sh-Sheep Pg-Pig Z-Zebrafish X-Xenopus C-Cow.