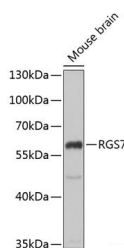


## RGS7 Polyclonal Antibody

<b>Catalog No.</b>	E-AB-61321	<b>Reactivity</b>	H,M,R
<b>Storage</b>	Store at -20°C. Avoid freeze / thaw cycles.	<b>Host</b>	Rabbit
<b>Applications</b>	WB	<b>Isotype</b>	IgG

**Note:** Centrifuge before opening to ensure complete recovery of vial contents.

### Images



Western blot analysis of extracts of Mouse brain using RGS7 Polyclonal Antibody at dilution of 1:1000.

### Immunogen Information

<b>Immunogen</b>	Recombinant fusion protein of human RGS7 (NP_002915.3).
<b>GeneID</b>	6000
<b>Swissprot</b>	P49802
<b>Synonyms</b>	RGS7

### Product Information

<b>Calculated MW</b>	49kDa/54kDa/55kDa/56kDa/57kDa
<b>Observed MW</b>	58kDa
<b>Buffer</b>	PBS with 0.02% sodium azide, 50% glycerol, pH7.3.
<b>Purify</b>	Affinity purification
<b>Dilution</b>	WB 1:500-1:2000

### Background

RGS7 (Regulator Of G Protein Signaling 7) is a Protein Coding gene. Diseases associated with RGS7 include Prolonged Electroretinal Response Suppression and Congenital Stationary Night Blindness. Among its related pathways are Signaling by GPCR and Myometrial Relaxation and Contraction Pathways. Gene Ontology (GO) annotations related to this gene include obsolete signal transducer activity and G-protein beta-subunit binding. An important paralog of this gene is RGS6.

#### For Research Use Only

Thank you for your recent purchase.

If you would like to learn more about antibodies, please visit [www.elabscience.com](http://www.elabscience.com).

**Focus on your research  
 Service for life science**

Applications: WB-Western Blot IHC-Immunohistochemistry IF-Immunofluorescence IP-Immunoprecipitation FC-Flow cytometry ChIP-Chromatin Immunoprecipitation Reactivity: H-Human R-Rat M-Mouse Mk-Monkey Dg-Dog Ch-Chicken Hm-Hamster Rb-Rabbit Sh-Sheep Pg-Pig Z-Zebrafish X-Xenopus C-Cow.