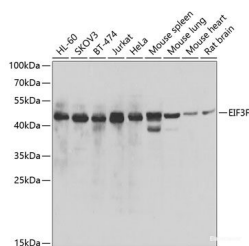


EIF3F Polyclonal Antibody

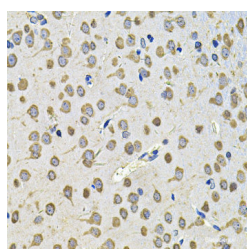
Catalog No.	E-AB-61475	Reactivity	H,M,R
Storage	Store at -20°C. Avoid freeze / thaw cycles.	Host	Rabbit
Applications	WB,IHC	Isotype	IgG

Note: Centrifuge before opening to ensure complete recovery of vial contents.

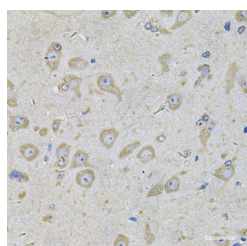
Images



Western blot analysis of extracts of various cell lines using EIF3F Polyclonal Antibody at dilution of 1:1000.



Immunohistochemistry of paraffin-embedded Rat brain using EIF3F Polyclonal Antibody at dilution of 1:100 (40x lens).



Immunohistochemistry of paraffin-embedded Mouse brain using EIF3F Polyclonal Antibody at dilution of 1:100 (40x lens).

Immunogen Information

Immunogen	Recombinant fusion protein of human EIF3F (NP_003745.1).
GeneID	8665
Swissprot	O00303
Synonyms	EIF3F,EIF3S5,eIF3-p47

Product Information

Calculated MW	37kDa
Observed MW	42kDa
Buffer	PBS with 0.02% sodium azide, 50% glycerol, pH7.3.
Purify	Affinity purification
Dilution	WB 1:500-1:2000 IHC 1:50-1:200

Background

EIF3F (Eukaryotic Translation Initiation Factor 3 Subunit F) is a Protein Coding gene. Diseases associated with EIF3F include Intellectual Developmental Disorder, Autosomal Recessive 67. Among its related pathways are Activation of the mRNA upon binding of the cap-binding complex and eIFs, and subsequent binding to 43S and Viral mRNA Translation. Gene Ontology (GO) annotations related to this gene include thiol-dependent ubiquitin-specific protease activity and translation initiation factor binding. An important paralog of this gene is PSMD7.

For Research Use Only

Thank you for your recent purchase.
 If you would like to learn more about antibodies, please visit www.elabscience.com.

Focus on your research
Service for life science

Applications:WB-Western Blot IHC-Immunohistochemistry IF-Immunofluorescence IP-Immunoprecipitation FC-Flow cytometry ChIP-Chromatin Immunoprecipitation Reactivity: H-Human R-Rat M-Mouse Mk-Monkey Dg-Dog Ch-Chicken Hm-Hamster Rb-Rabbit Sh-Sheep Pg-Pig Z-Zebrafish X-Xenopus C-Cow.