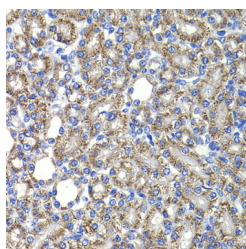


COPS2 Polyclonal Antibody

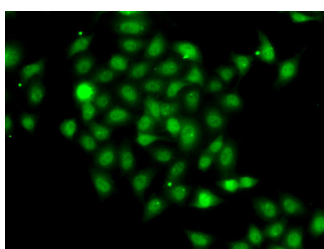
Catalog No.	E-AB-61482	Reactivity	H,M,R
Storage	Store at -20°C. Avoid freeze / thaw cycles.	Host	Rabbit
Applications	IHC,IF	Isotype	IgG

Note: Centrifuge before opening to ensure complete recovery of vial contents.

Images



Immunohistochemistry of paraffin-embedded Rat kidney using COPS2 Polyclonal Antibody at dilution of 1:100 (40x lens).



Immunofluorescence analysis of A-549 cells using COPS2 Polyclonal Antibody

Immunogen Information

Immunogen	Recombinant fusion protein of human COPS2 (NP_004227.1).
GeneID	9318
Swissprot	P61201
Synonyms	COPS2,ALIEN,CSN2,SGN2,TRIP15

Product Information

Buffer	PBS with 0.02% sodium azide, 50% glycerol, pH7.3.
Purify	Affinity purification
Dilution	IHC 1:50-1:200 IF 1:50-1:100

Background

COPS2 (COP9 Signalosome Subunit 2) is a Protein Coding gene. Diseases associated with COPS2 include Xeroderma Pigmentosum, Complementation Group E and Persistent Hyperplastic Primary Vitreous. Among its related pathways are Clathrin-mediated endocytosis and Transcription-Coupled Nucleotide Excision Repair (TC-NER). Gene Ontology (GO) annotations related to this gene include obsolete signal transducer activity and transcription corepressor activity. An important paralog of this gene is PSMD11.

For Research Use Only

Thank you for your recent purchase.
 If you would like to learn more about antibodies, please visit www.elabscience.com.

**Focus on your research
 Service for life science**

Applications:WB-Western Blot IHC-Immunohistochemistry IF-Immunofluorescence IP-Immunoprecipitation FC-Flow cytometry ChIP-Chromatin Immunoprecipitation Reactivity: H-Human R-Rat M-Mouse Mk-Monkey Dg-Dog Ch-Chicken Hm-Hamster Rb-Rabbit Sh-Sheep Pg-Pig Z-Zebrafish X-Xenopus C-Cow.