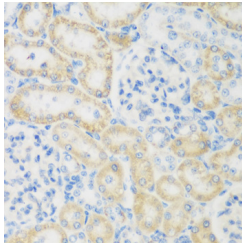


## NAT8B Polyclonal Antibody

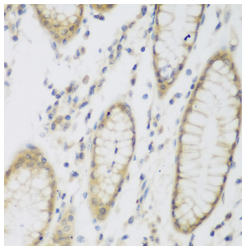
|                     |   |                   |        |
|---------------------|---|-------------------|--------|
| <b>Catalog No.</b>  | E-AB-61582                                  | <b>Reactivity</b> | H,M,R  |
| <b>Storage</b>      | Store at -20°C. Avoid freeze / thaw cycles. | <b>Host</b>       | Rabbit |
| <b>Applications</b> | IHC   | <b>Isotype</b>    | IgG    |

**Note:** Centrifuge before opening to ensure complete recovery of vial contents.

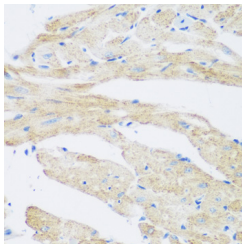
### Images



Immunohistochemistry of paraffin-embedded Rat kidney using NAT8B Polyclonal Antibody at dilution of 1:200 (40x lens).



Immunohistochemistry of paraffin-embedded Human stomach using NAT8B Polyclonal Antibody at dilution of 1:200 (40x lens).



Immunohistochemistry of paraffin-embedded Mouse heart using NAT8B Polyclonal Antibody at dilution of 1:200 (40x lens).

### Immunogen Information

|                  |  |
|------------------|--|
| <b>Immunogen</b> | Recombinant fusion protein of human NAT8B (NP_057431.2). |
| <b>GeneID</b>    | 51471  |
| <b>Swissprot</b> | Q9UHF3   |
| <b>Synonyms</b>  | NAT8B,CML2,Hcml2,NAT8BP                                  |

### Product Information

|                 |   |
|-----------------|---|
| <b>Buffer</b>   | PBS with 0.02% sodium azide, 50% glycerol, pH7.3. |
| <b>Purify</b>   | Affinity purification                             |
| <b>Dilution</b> | IHC 1:50-1:200                                    |

### Background

The protein encoded by this gene is highly similar to the N-acetyltransferase 8 (NAT8) gene product, which is a kidney and liver protein with homology to bacterial acetyltransferases involved in drug resistance. This gene is localized on chromosome 2 in the vicinity of the NAT8 gene and may represent a pseudogene of NAT8. This gene contains two polymorphic nonsense mutations that disrupt the active site of the protein. The full-length product of this gene contains a complete acetyltransferase domain and is identical in length to NAT8.

#### For Research Use Only

Thank you for your recent purchase.  
 If you would like to learn more about antibodies, please visit [www.elabscience.com](http://www.elabscience.com).

**Focus on your research  
 Service for life science**

Applications:WB-Western Blot IHC-Immunohistochemistry IF-Immunofluorescence IP-Immunoprecipitation FC-Flow cytometry ChIP-Chromatin Immunoprecipitation Reactivity: H-Human R-Rat M-Mouse Mk-Monkey Dg-Dog Ch-Chicken Hm-Hamster Rb-Rabbit Sh-Sheep Pg-Pig Z-Zebrafish X-Xenopus C-Cow.