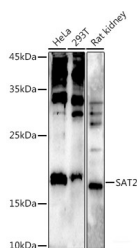


## SAT2 Polyclonal Antibody

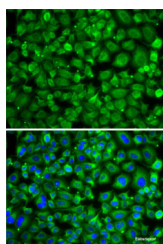
<b>Catalog No.</b>	E-AB-61588	<b>Reactivity</b>	H,R
<b>Storage</b>	Store at -20°C. Avoid freeze / thaw cycles.	<b>Host</b>	Rabbit
<b>Applications</b>	WB,IF	<b>Isotype</b>	IgG

**Note:** Centrifuge before opening to ensure complete recovery of vial contents.

### Images



Western blot analysis of extracts of various cell lines using SAT2 Polyclonal Antibody at 1:500 dilution.



Immunofluorescence analysis of A-549 cells using SAT2 Polyclonal Antibody Blue: DAPI for nuclear staining.

### Immunogen Information

<b>Immunogen</b>	Recombinant fusion protein of human SAT2
<b>GeneID</b>	112483
<b>Swissprot</b>	Q96F10
<b>Synonyms</b>	SAT2,SSAT2

### Product Information

<b>Calculated MW</b>	19kDa
<b>Observed MW</b>	19KDa
<b>Buffer</b>	PBS with 0.02% sodium azide,50% glycerol,pH7.3.
<b>Purify</b>	Affinity purification
<b>Dilution</b>	WB 1:500-1:2000,IF 1:50-1:100

### Background

Catalyzes the N-acetylation of the amino acid thialysine (S-(2-aminoethyl)-L-cysteine, a L-lysine analog with the 4-methylene group substituted with a sulfur. May also catalyze acetylation of polyamines, such as norspermidine, spermidine or spermine. However, ability to acetylate polyamines is weak, suggesting that it does not act as a diamine acetyltransferase in vivo.

#### For Research Use Only

Thank you for your recent purchase.  
 If you would like to learn more about antibodies, please visit [www.elabscience.com](http://www.elabscience.com).

**Focus on your research  
 Service for life science**

Applications:WB-Western Blot IHC-Immunohistochemistry IF-Immunofluorescence IP-Immunoprecipitation FC-Flow cytometry ChIP-Chromatin Immunoprecipitation Reactivity: H-Human R-Rat M-Mouse Mk-Monkey Dg-Dog Ch-Chicken Hm-Hamster Rb-Rabbit Sh-Sheep Pg-Pig Z-Zebrafish X-Xenopus C-Cow.