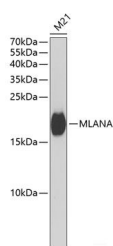


MLANA Polyclonal Antibody

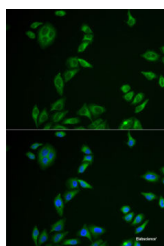
Catalog No.	E-AB-61863	Reactivity	H,M,R
Storage	Store at -20°C. Avoid freeze / thaw cycles.	Host	Rabbit
Applications	WB,IF	Isotype	IgG

Note: Centrifuge before opening to ensure complete recovery of vial contents.

Images



Western blot analysis of extracts of M21 cells using MLANA Polyclonal Antibody at dilution of 1:1000.



Immunofluorescence analysis of U2OS cells using MLANA Polyclonal Antibody

Immunogen Information

Immunogen	Recombinant fusion protein of human MLANA (NP_005502.1).
GeneID	2315
Swissprot	Q16655
Synonyms	MLANA,MART-1,MART1,melan-A

Product Information

Calculated MW	13kDa
Observed MW	18kDa
Buffer	PBS with 0.02% sodium azide, 50% glycerol, pH7.3.
Purify	Affinity purification
Dilution	WB 1:500-1:2000 IF 1:50-1:200

Background

Melan-A is a melanocyte differentiation antigen, recognized by autologous cytotoxic T lymphocytes. Melan-A is also called MART-1 (melanoma antigen recognized by T cells). The Melan-A/MART-1 gene encodes this protein, 20-22 kDa, associated with endoplasmic reticulum and melanosomes. The function of the protein is unknown. Melan-A, isolated as a melanoma-specific antigen, is a transmembrane protein, which is expressed in skin, retina and the majority of cultured melanocytes as well as in melanomas. Melan A is expressed in more than 85% of melanomas.

For Research Use Only

Thank you for your recent purchase.
 If you would like to learn more about antibodies, please visit www.elabscience.com.

**Focus on your research
 Service for life science**

Applications: WB-Western Blot IHC-Immunohistochemistry IF-Immunofluorescence IP-Immunoprecipitation FC-Flow cytometry ChIP-Chromatin Immunoprecipitation Reactivity: H-Human R-Rat M-Mouse Mk-Monkey Dg-Dog Ch-Chicken Hm-Hamster Rb-Rabbit Sh-Sheep Pg-Pig Z-Zebrafish X-Xenopus C-Cow.