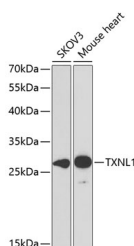


## TXNL1 Polyclonal Antibody

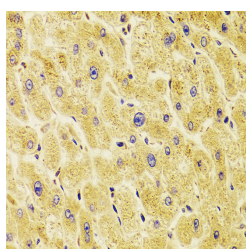
<b>Catalog No.</b>	E-AB-61887	<b>Reactivity</b>	H,M,R
<b>Storage</b>	Store at -20°C. Avoid freeze / thaw cycles.	<b>Host</b>	Rabbit
<b>Applications</b>	WB,IHC,IF	<b>Isotype</b>	IgG

**Note:** Centrifuge before opening to ensure complete recovery of vial contents.

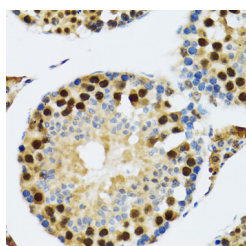
### Images



Western blot analysis of extracts of various cell lines using TXNL1 Polyclonal Antibody at dilution of 1:1000.



Immunohistochemistry of paraffin-embedded Human liver damage using TXNL1 Polyclonal Antibody at dilution of 1:100 (40x lens).



Immunohistochemistry of paraffin-embedded Rat testis using TXNL1 Polyclonal Antibody at dilution of 1:100 (40x lens).

### Immunogen Information

<b>Immunogen</b>	Recombinant fusion protein of human TXNL1 (NP_004777.1).
<b>GeneID</b>	9352
<b>Swissprot</b>	O43396
<b>Synonyms</b>	TXNL1,HEL-S-114,TRP32,TXL-1,TXNL,Txl

### Product Information

<b>Calculated MW</b>	32kDa
<b>Observed MW</b>	32kDa
<b>Buffer</b>	PBS with 0.02% sodium azide, 50% glycerol, pH7.3.
<b>Purify</b>	Affinity purification
<b>Dilution</b>	WB 1:500-1:2000 IHC 1:50-1:200 IF 1:50-1:200

### Background

TXNL1 (Thioredoxin Like 1) is a Protein Coding gene. Diseases associated with TXNL1 include Human Monocytic Ehrlichiosis and Ehrlichiosis. Gene Ontology (GO) annotations related to this gene include protein disulfide oxidoreductase activity and disulfide oxidoreductase activity. An important paralog of this gene is TXN.

#### For Research Use Only

Thank you for your recent purchase.  
 If you would like to learn more about antibodies, please visit [www.elabscience.com](http://www.elabscience.com).

**Focus on your research  
 Service for life science**

Applications:WB-Western Blot IHC-Immunohistochemistry IF-Immunofluorescence IP-Immunoprecipitation FC-Flow cytometry ChIP-Chromatin Immunoprecipitation Reactivity: H-Human R-Rat M-Mouse Mk-Monkey Dg-Dog Ch-Chicken Hm-Hamster Rb-Rabbit Sh-Sheep Pg-Pig Z-Zebrafish X-Xenopus C-Cow.