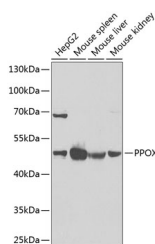


## PPOX Polyclonal Antibody

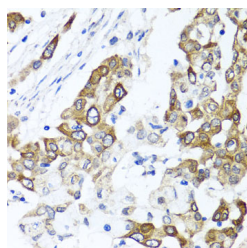
|                     |   |                   |        |
|---------------------|---|-------------------|--------|
| <b>Catalog No.</b>  | E-AB-61932                                  | <b>Reactivity</b> | H,M    |
| <b>Storage</b>      | Store at -20°C. Avoid freeze / thaw cycles. | <b>Host</b>       | Rabbit |
| <b>Applications</b> | WB,IHC                                      | <b>Isotype</b>    | IgG    |

**Note:** Centrifuge before opening to ensure complete recovery of vial contents.

### Images



Western blot analysis of extracts of various cell lines using PPOX Polyclonal Antibody at 1:1000 dilution.



Immunohistochemistry of paraffin-embedded human colon carcinoma using PPOX Polyclonal Antibody at dilution of 1:100 (40x lens). Perform microwave antigen retrieval with 10 mM PBS buffer pH 7.2 before commencing with IHC staining protocol.

### Immunogen Information

|                  |  |
|------------------|--|
| <b>Immunogen</b> | Recombinant fusion protein of human PPOX |
| <b>GeneID</b>    | 5498                                     |
| <b>Swissprot</b> | P50336                                   |
| <b>Synonyms</b>  | PPOX,PPO,V290M,VP                        |

### Product Information

|                      |   |
|----------------------|---|
| <b>Calculated MW</b> | 50kDa   |
| <b>Observed MW</b>   | 51kDa   |
| <b>Buffer</b>        | PBS with 0.02% sodium azide,50% glycerol,pH7.3. |
| <b>Purify</b>        | Affinity purification                           |
| <b>Dilution</b>      | WB 1:500-1:2000,IHC 1:50-1:200                  |

### Background

This gene encodes the penultimate enzyme of heme biosynthesis, which catalyzes the 6-electron oxidation of protoporphyrinogen IX to form protoporphyrin IX. Mutations in this gene cause variegate porphyria, an autosomal dominant disorder of heme metabolism resulting from a deficiency in protoporphyrinogen oxidase, an enzyme located on the inner mitochondrial membrane. Alternatively spliced transcript variants encoding the same protein have been identified.

#### For Research Use Only

Thank you for your recent purchase.  
 If you would like to learn more about antibodies, please visit [www.elabscience.com](http://www.elabscience.com).

**Focus on your research  
 Service for life science**

Applications:WB-Western Blot IHC-Immunohistochemistry IF-Immunofluorescence IP-Immunoprecipitation FC-Flow cytometry ChIP-Chromatin Immunoprecipitation Reactivity: H-Human R-Rat M-Mouse Mk-Monkey Dg-Dog Ch-Chicken Hm-Hamster Rb-Rabbit Sh-Sheep Pg-Pig Z-Zebrafish X-Xenopus C-Cow.