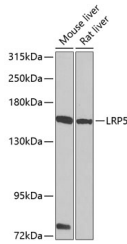


## LRP5 Polyclonal Antibody

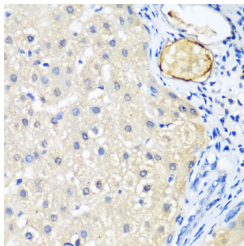
<b>Catalog No.</b>	E-AB-62118	<b>Reactivity</b>	H,M,R
<b>Storage</b>	Store at -20°C. Avoid freeze / thaw cycles.	<b>Host</b>	Rabbit
<b>Applications</b>	WB,IHC	<b>Isotype</b>	IgG

**Note:** Centrifuge before opening to ensure complete recovery of vial contents.

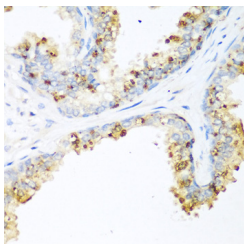
### Images



Western blot analysis of extracts of various cell lines using LRP5 Polyclonal Antibody at dilution of 1:1000.



Immunohistochemistry of paraffin-embedded Human liver using LRP5 Polyclonal Antibody at dilution of 1:200 (40x lens).



Immunohistochemistry of paraffin-embedded Human prostate using LRP5 Polyclonal Antibody at dilution of 1:200 (40x lens).

### Immunogen Information

<b>Immunogen</b>	Recombinant fusion protein of human LRP5 (NP_002326.2).
<b>GeneID</b>	4041
<b>Swissprot</b>	O75197
<b>Synonyms</b>	LRP5,BMND1,EVR1,EVR4,HBM,LR3,LRP-5,LRP7,OPPG,OPS,OPTA1,VBCH2

### Product Information

<b>Calculated MW</b>	179kDa
<b>Observed MW</b>	150kDa
<b>Buffer</b>	PBS with 0.02% sodium azide, 50% glycerol, pH7.3.
<b>Purify</b>	Affinity purification
<b>Dilution</b>	WB 1:500-1:2000 IHC 1:50-1:200

### Background

This gene encodes a transmembrane low-density lipoprotein receptor that binds and internalizes ligands in the process of receptor-mediated endocytosis. This protein also acts as a co-receptor with Frizzled protein family members for transducing signals by Wnt proteins and was originally cloned on the basis of its association with type 1 diabetes mellitus in humans. This protein plays a key role in skeletal homeostasis and many bone density related diseases are caused by mutations in this gene. Mutations in this gene also cause familial exudative vitreoretinopathy. Alternative splicing results in multiple transcript variants.

### For Research Use Only

Thank you for your recent purchase.  
 If you would like to learn more about antibodies, please visit [www.elabscience.com](http://www.elabscience.com).

**Focus on your research  
 Service for life science**

Applications:WB-Western Blot IHC-Immunohistochemistry IF-Immunofluorescence IP-Immunoprecipitation FC-Flow cytometry ChIP-Chromatin Immunoprecipitation Reactivity: H-Human R-Rat M-Mouse Mk-Monkey Dg-Dog Ch-Chicken Hm-Hamster Rb-Rabbit Sh-Sheep Pg-Pig Z-Zebrafish X-Xenopus C-Cow.