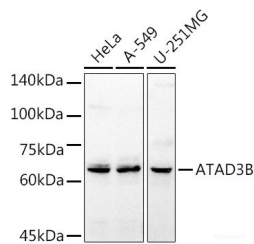


## ATAD3B Polyclonal Antibody

<b>Catalog No.</b>	E-AB-62541	<b>Reactivity</b>	H
<b>Storage</b>	Store at -20°C. Avoid freeze / thaw cycles.	<b>Host</b>	Rabbit
<b>Applications</b>	WB	<b>Isotype</b>	IgG

**Note:** Centrifuge before opening to ensure complete recovery of vial contents.

### Images



Western blot analysis of extracts of various cell lines using ATAD3B Polyclonal Antibody at 1:1000 dilution.

### Immunogen Information

<b>Immunogen</b>	Recombinant fusion protein of human ATAD3B
<b>GeneID</b>	83858
<b>Swissprot</b>	Q5T9A4
<b>Synonyms</b>	ATAD3B,AAA-TOB3,TOB3,ATPase family

### Product Information

<b>Calculated MW</b>	19kDa/67kDa/72kDa
<b>Observed MW</b>	68kDa
<b>Buffer</b>	PBS with 0.02% sodium azide,50% glycerol,pH7.3.
<b>Purify</b>	Affinity purification
<b>Dilution</b>	WB 1:500-1:2000

### Background

The protein encoded by this gene is localized to the mitochondrial inner membrane, where it can bind to a highly-related protein, ATAD3A. ATAD3A appears to interact with matrix nucleoid complexes, and the encoded protein negatively regulates that interaction. This gene is expressed almost exclusively in pluripotent embryonic stem cells and some cancer cells. Two transcript variants encoding different isoforms have been found for this gene.

#### For Research Use Only

Thank you for your recent purchase.  
 If you would like to learn more about antibodies, please visit [www.elabscience.com](http://www.elabscience.com).

**Focus on your research  
 Service for life science**

Applications:WB-Western Blot IHC-Immunohistochemistry IF-Immunofluorescence IP-Immunoprecipitation FC-Flow cytometry ChIP-Chromatin Immunoprecipitation Reactivity: H-Human R-Rat M-Mouse Mk-Monkey Dg-Dog Ch-Chicken Hm-Hamster Rb-Rabbit Sh-Sheep Pg-Pig Z-Zebrafish X-Xenopus C-Cow.