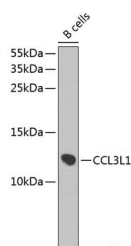


## CCL3L1 Polyclonal Antibody

<b>Catalog No.</b>	E-AB-62907	<b>Reactivity</b>	H
<b>Storage</b>	Store at -20°C. Avoid freeze / thaw cycles.	<b>Host</b>	Rabbit
<b>Applications</b>	WB	<b>Isotype</b>	IgG

**Note:** Centrifuge before opening to ensure complete recovery of vial contents.

### Images



Western blot analysis of extracts of B-cell cells using CCL3L1 Polyclonal Antibody at dilution of 1:1000.

### Immunogen Information

<b>Immunogen</b>	Recombinant fusion protein of human CCL3L1 (NP_066286.1).
<b>GeneID</b>	6349
<b>Swissprot</b>	P16619
<b>Synonyms</b>	CCL3L1,464.2,D17S1718,G0S19-2,LD78,LD78-beta (1-70),LD78BETA,MIP1AP,SCYA3L,SCYA3L1

### Product Information

<b>Calculated MW</b>	10kDa
<b>Observed MW</b>	12kDa
<b>Buffer</b>	PBS with 0.02% sodium azide, 50% glycerol, pH7.3.
<b>Purify</b>	Affinity purification
<b>Dilution</b>	WB 1:500-1:2000

### Background

This gene is one of several cytokine genes that are clustered on the q-arm of chromosome 17. Cytokines are a family of secreted proteins that function in inflammatory and immunoregulatory processes. The protein encoded by this gene binds to several chemokine receptors, including chemokine binding protein 2 and chemokine (C-C motif) receptor 5 (CCR5). CCR5 is a co-receptor for HIV, and binding of this protein to CCR5 inhibits HIV entry. The copy number of this gene varies among individuals, where most individuals have one to six copies, and a minority of individuals have zero or more than six copies. There are conflicting reports about copy number variation of this gene and its correlation to disease susceptibility. This record represents one of two copies that are present on the ALT\_REF\_LOCI\_2 alternate haplotype of the GRCh38 human reference genome assembly. Alternative splicing of this gene results in multiple transcript variants.

#### For Research Use Only

Thank you for your recent purchase.  
 If you would like to learn more about antibodies, please visit [www.elabscience.com](http://www.elabscience.com).

**Focus on your research  
 Service for life science**

Applications:WB-Western Blot IHC-Immunohistochemistry IF-Immunofluorescence IP-Immunoprecipitation FC-Flow cytometry ChIP-Chromatin Immunoprecipitation Reactivity: H-Human R-Rat M-Mouse Mk-Monkey Dg-Dog Ch-Chicken Hm-Hamster Rb-Rabbit Sh-Sheep Pg-Pig Z-Zebrafish X-Xenopus C-Cow.