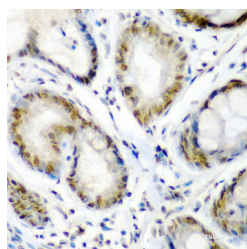


SS18 Polyclonal Antibody

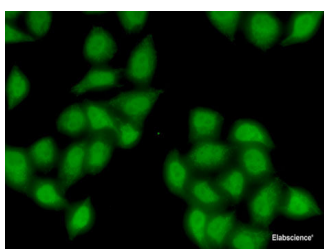
Catalog No.	E-AB-62928	Reactivity	H
Storage	Store at -20°C. Avoid freeze / thaw cycles.	Host	Rabbit
Applications	IHC,IF	Isotype	IgG

Note: Centrifuge before opening to ensure complete recovery of vial contents.

Images



Immunohistochemistry of paraffin-embedded Human colon carcinoma using SS18 Polyclonal Antibody at dilution of 1:200 (40x lens).



Immunofluorescence analysis of MCF7 cells using SS18 Polyclonal Antibody

Immunogen Information

Immunogen	Recombinant fusion protein of human SS18 (NP_001007560.1).
GeneID	6760
Swissprot	Q15532
Synonyms	SS18,SSXT,SYT

Product Information

Buffer	PBS with 0.02% sodium azide, 50% glycerol, pH7.3.
Purify	Affinity purification
Dilution	IHC 1:50-1:200 IF 1:50-1:100

Background

SS18 (SS18 Subunit Of BAF Chromatin Remodeling Complex) is a Protein Coding gene. Diseases associated with SS18 include Sarcoma, Synovial and Biphasic Synovial Sarcoma. Among its related pathways are Transcriptional misregulation in cancer and Chromatin Regulation / Acetylation. Gene Ontology (GO) annotations related to this gene include nuclear receptor transcription coactivator activity. An important paralog of this gene is SS18L1.

For Research Use Only

Thank you for your recent purchase.
 If you would like to learn more about antibodies, please visit www.elabscience.com.

**Focus on your research
 Service for life science**

Applications:WB-Western Blot IHC-Immunohistochemistry IF-Immunofluorescence IP-Immunoprecipitation FC-Flow cytometry ChIP-Chromatin Immunoprecipitation Reactivity: H-Human R-Rat M-Mouse Mk-Monkey Dg-Dog Ch-Chicken Hm-Hamster Rb-Rabbit Sh-Sheep Pg-Pig Z-Zebrafish X-Xenopus C-Cow.