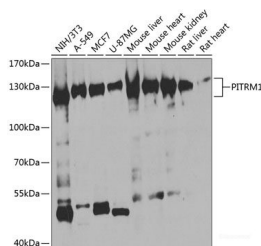


PITRM1 Polyclonal Antibody

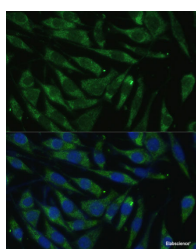
| | | | |
|---------------------|---|-------------------|--------|
| Catalog No. | E-AB-63039 | Reactivity | H,M,R |
| Storage | Store at -20°C. Avoid freeze / thaw cycles. | Host | Rabbit |
| Applications | WB,IF | Isotype | IgG |

Note: Centrifuge before opening to ensure complete recovery of vial contents.

Images



Western blot analysis of extracts of various cell lines using PITRM1 Polyclonal Antibody at 1:1000 dilution.



Immunofluorescence analysis of L929 cells using PITRM1 Polyclonal Antibody at dilution of 1:100 (40x lens). Blue: DAPI for nuclear staining.

Immunogen Information

| | |
|------------------|--|
| Immunogen | Recombinant fusion protein of human PITRM1 |
| GeneID | 10531 |
| Swissprot | Q5JRX3 |
| Synonyms | PITRM1,MP1,PreP |

Product Information

| | |
|----------------------|---|
| Calculated MW | 106kDa/117kDa |
| Observed MW | 117kDa |
| Buffer | PBS with 0.02% sodium azide,50% glycerol,pH7.3. |
| Purify | Affinity purification |
| Dilution | WB 1:500-1:2000,IF 1:50-1:200 |

Background

The protein encoded by this gene is an ATP-dependent metalloprotease that degrades post-cleavage mitochondrial transit peptides. The encoded protein binds zinc and can also degrade amyloid beta A4 protein, suggesting a possible role in Alzheimer's disease.

For Research Use Only

Thank you for your recent purchase.
 If you would like to learn more about antibodies, please visit www.elabscience.com.

**Focus on your research
 Service for life science**

Applications:WB-Western Blot IHC-Immunohistochemistry IF-Immunofluorescence IP-Immunoprecipitation FC-Flow cytometry ChIP-Chromatin Immunoprecipitation Reactivity: H-Human R-Rat M-Mouse Mk-Monkey Dg-Dog Ch-Chicken Hm-Hamster Rb-Rabbit Sh-Sheep Pg-Pig Z-Zebrafish X-Xenopus C-Cow.