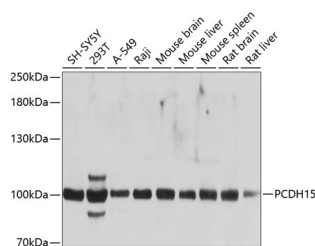


PCDH15 Polyclonal Antibody

Catalog No.	E-AB-63170	Reactivity	H,M,R
Storage	Store at -20°C. Avoid freeze / thaw cycles.	Host	Rabbit
Applications	WB	Isotype	IgG

Note: Centrifuge before opening to ensure complete recovery of vial contents.

Images



Western blot analysis of extracts of various cell lines using PCDH15 Polyclonal Antibody at dilution of 1:1000.

Immunogen Information

Immunogen	Recombinant fusion protein of human PCDH15 (NP_001136235.1).
GeneID	65217
Swissprot	Q96QU1
Synonyms	PCDH15,CDHR15,DFNB23,USH1F

Product Information

Calculated MW	92kDa/106kDa/185kDa/197kDa/216kDa
Observed MW	100kDa
Buffer	PBS with 0.02% sodium azide, 50% glycerol, pH7.3.
Purify	Affinity purification
Dilution	WB 1:500-1:2000

Background

This gene is a member of the cadherin superfamily. Family members encode integral membrane proteins that mediate calcium-dependent cell-cell adhesion. It plays an essential role in maintenance of normal retinal and cochlear function. Mutations in this gene result in hearing loss and Usher Syndrome Type IF (USH1F). Extensive alternative splicing resulting in multiple isoforms has been observed in the mouse ortholog. Similar alternatively spliced transcripts are inferred to occur in human, and additional variants are likely to occur.

For Research Use Only

Thank you for your recent purchase.
 If you would like to learn more about antibodies, please visit www.elabscience.com.

**Focus on your research
 Service for life science**

Applications:WB-Western Blot IHC-Immunohistochemistry IF-Immunofluorescence IP-Immunoprecipitation FC-Flow cytometry ChIP-Chromatin Immunoprecipitation Reactivity: H-Human R-Rat M-Mouse Mk-Monkey Dg-Dog Ch-Chicken Hm-Hamster Rb-Rabbit Sh-Sheep Pg-Pig Z-Zebrafish X-Xenopus C-Cow.