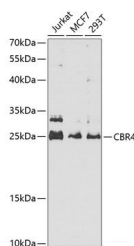


## CBR4 Polyclonal Antibody

<b>Catalog No.</b>	E-AB-63190	<b>Reactivity</b>	H,R
<b>Storage</b>	Store at -20°C. Avoid freeze / thaw cycles.	<b>Host</b>	Rabbit
<b>Applications</b>	WB	<b>Isotype</b>	IgG

**Note:** Centrifuge before opening to ensure complete recovery of vial contents.

### Images



Western blot analysis of extracts of various cell lines using CBR4 Polyclonal Antibody at 1:1000 dilution.

### Immunogen Information

<b>Immunogen</b>	Recombinant fusion protein of human CBR4
<b>GeneID</b>	84869
<b>Swissprot</b>	Q8N4T8
<b>Synonyms</b>	CBR4,SDR45C1

### Product Information

<b>Calculated MW</b>	18kDa/25kDa
<b>Observed MW</b>	25kDa
<b>Buffer</b>	PBS with 0.02% sodium azide,50% glycerol,pH7.3.
<b>Purify</b>	Affinity purification
<b>Dilution</b>	WB 1:200-1:2000

### Background

Component of the heterotetramer complex KAR (3-ketoacyl-[acyl carrier protein] reductase or 3-ketoacyl-[ACP] reductase that forms part of the mitochondrial fatty acid synthase (mtFAS. Beta-subunit of the KAR heterotetramer complex, responsible for the 3-ketoacyl-ACP reductase activity of the mtFAS, reduces 3-oxoacyl-[ACP] to (3R-hydroxyacyl-[ACP] in a NADPH-dependent manner with no chain length preference, thereby participating in mitochondrial fatty acid biosynthesis. The homotetramer has NADPH-dependent quinone reductase activity (in vitro, hence could play a role in protection against cytotoxicity of exogenous quinones. As a heterotetramer, it can also reduce 9,10-phenanthrenequinone, 1,4-benzoquinone and various other o-quinones and p-quinones (in vitro).

#### For Research Use Only

Thank you for your recent purchase.

If you would like to learn more about antibodies, please visit [www.elabscience.com](http://www.elabscience.com).

**Focus on your research  
 Service for life science**

Applications:WB-Western Blot IHC-Immunohistochemistry IF-Immunofluorescence IP-Immunoprecipitation FC-Flow cytometry ChIP-Chromatin Immunoprecipitation Reactivity: H-Human R-Rat M-Mouse Mk-Monkey Dg-Dog Ch-Chicken Hm-Hamster Rb-Rabbit Sh-Sheep Pg-Pig Z-Zebrafish X-Xenopus C-Cow.