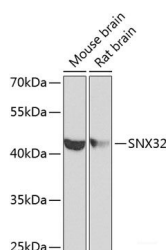


SNX32 Polyclonal Antibody

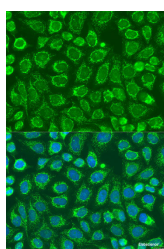
Catalog No.	E-AB-63227	Reactivity	H,M,R
Storage	Store at -20°C. Avoid freeze / thaw cycles.	Host	Rabbit
Applications	WB,IF	Isotype	IgG

Note: Centrifuge before opening to ensure complete recovery of vial contents.

Images



Western blot analysis of extracts of various cell lines using SNX32 Polyclonal Antibody at dilution of 1:1000.



Immunofluorescence analysis of U2OS cells using SNX32 Polyclonal Antibody at dilution of 1:100. Blue: DAPI for nuclear staining.

Immunogen Information

Immunogen	Recombinant fusion protein of human SNX32 (NP_689973.2).
GeneID	254122
Swissprot	Q86XE0
Synonyms	SNX32,SNX6B

Product Information

Calculated MW	31kDa/46kDa
Observed MW	46kDa
Buffer	PBS with 0.02% sodium azide, 50% glycerol, pH7.3.
Purify	Affinity purification
Dilution	WB 1:500-1:2000 IF 1:50-1:200

Background

SNX32 (Sorting Nexin 32) is a Protein Coding gene. Diseases associated with SNX32 include Eastern Equine Encephalitis. Among its related pathways are Endocytosis. Gene Ontology (GO) annotations related to this gene include phosphatidylinositol binding. An important paralog of this gene is SNX6.

For Research Use Only

Thank you for your recent purchase.
 If you would like to learn more about antibodies, please visit www.elabscience.com.

**Focus on your research
 Service for life science**

Applications:WB-Western Blot IHC-Immunohistochemistry IF-Immunofluorescence IP-Immunoprecipitation FC-Flow cytometry ChIP-Chromatin Immunoprecipitation Reactivity: H-Human R-Rat M-Mouse Mk-Monkey Dg-Dog Ch-Chicken Hm-Hamster Rb-Rabbit Sh-Sheep Pg-Pig Z-Zebrafish X-Xenopus C-Cow.