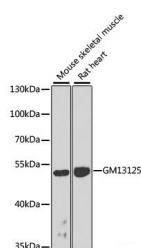


Gm13125 Polyclonal Antibody

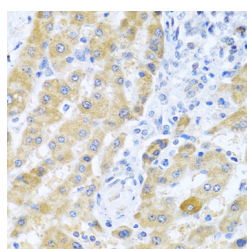
Catalog No.	E-AB-63235	Reactivity	H,M,R
Storage	Store at -20°C. Avoid freeze / thaw cycles.	Host	Rabbit
Applications	WB,IHC	Isotype	IgG

Note: Centrifuge before opening to ensure complete recovery of vial contents.

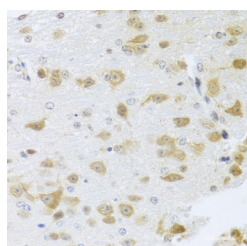
Images



Western blot analysis of extracts of various cell lines using Gm13125 Polyclonal Antibody at dilution of 1:1000.



Immunohistochemistry of paraffin-embedded Human liver cancer using Gm13125 Polyclonal Antibody at dilution of 1:100 (40x lens).



Immunohistochemistry of paraffin-embedded Mouse brain using Gm13125 Polyclonal Antibody at dilution of 1:100 (40x lens).

Immunogen Information

Immunogen	Recombinant fusion protein of mouse Gm13125 (NP_001108549.1).
GeneID	627009
Swissprot	Q5VT98
Synonyms	PRAMEF20,PRAMEF21,Gm13125

Product Information

Calculated MW	55kDa
Observed MW	55kDa
Buffer	PBS with 0.02% sodium azide, 50% glycerol, pH7.3.
Purify	Affinity purification
Dilution	WB 1:500-1:2000 IHC 1:100-1:200

Background

PRAMEF20 (PRAME Family Member 20) is a Protein Coding gene. Diseases associated with PRAMEF20 include Dandy-Walker Syndrome. Gene Ontology (GO) annotations related to this gene include retinoic acid receptor binding. An important paralog of this gene is PRAMEF6.

For Research Use Only

Thank you for your recent purchase.
 If you would like to learn more about antibodies, please visit www.elabscience.com.

Focus on your research
Service for life science

Applications:WB-Western Blot IHC-Immunohistochemistry IF-Immunofluorescence IP-Immunoprecipitation FC-Flow cytometry ChIP-Chromatin Immunoprecipitation Reactivity: H-Human R-Rat M-Mouse Mk-Monkey Dg-Dog Ch-Chicken Hm-Hamster Rb-Rabbit Sh-Sheep Pg-Pig Z-Zebrafish X-Xenopus C-Cow.