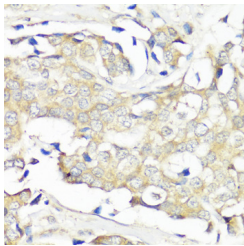


EIF3B Polyclonal Antibody

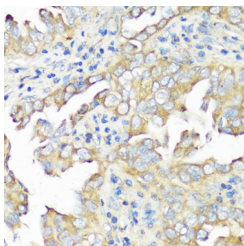
Catalog No.	E-AB-63318	Reactivity	H,M,R
Storage	Store at -20°C. Avoid freeze / thaw cycles.	Host	Rabbit
Applications	IHC,IF	Isotype	IgG

Note: Centrifuge before opening to ensure complete recovery of vial contents.

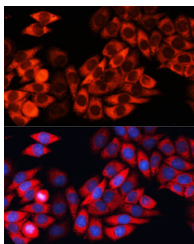
Images



Immunohistochemistry of paraffin-embedded Human breast cancer using EIF3B Polyclonal Antibody at dilution of 1:100 (40x lens).



Immunohistochemistry of paraffin-embedded Human lung cancer using EIF3B Polyclonal Antibody at dilution of 1:100 (40x lens).



Immunofluorescence analysis of HeLa cells using EIF3B Polyclonal Antibody at dilution of 1:100 (40x lens). Blue: DAPI for nuclear staining.

Immunogen Information

Immunogen	Recombinant fusion protein of human EIF3B (NP_003742.2).
GeneID	8662
Swissprot	P55884
Synonyms	EIF3B,EIF3-ETA,EIF3-P110,EIF3-P116,EIF3S9,PR T1

Product Information

Buffer	PBS with 0.02% sodium azide, 50% glycerol, pH7.3.
Purify	Affinity purification
Dilution	IHC 1:50-1:200 IF 1:50-1:200

Background

EIF3B (Eukaryotic Translation Initiation Factor 3 Subunit B) is a Protein Coding gene. Diseases associated with EIF3B include Mouth Disease. Among its related pathways are Activation of the mRNA upon binding of the cap-binding complex and eIFs, and subsequent binding to 43S and Viral mRNA Translation. Gene Ontology (GO) annotations related to this gene include nucleic acid binding and nucleotide binding.

For Research Use Only

Thank you for your recent purchase.
 If you would like to learn more about antibodies, please visit www.elabscience.com.

**Focus on your research
 Service for life science**

Applications:WB-Western Blot IHC-Immunohistochemistry IF-Immunofluorescence IP-Immunoprecipitation FC-Flow cytometry ChIP-Chromatin Immunoprecipitation Reactivity: H-Human R-Rat M-Mouse Mk-Monkey Dg-Dog Ch-Chicken Hm-Hamster Rb-Rabbit Sh-Sheep Pg-Pig Z-Zebrafish X-Xenopus C-Cow.