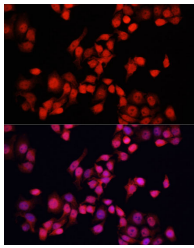


## YAP1 Polyclonal Antibody

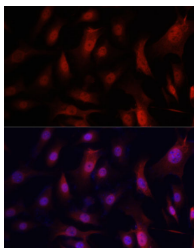
|                     |   |                   |        |
|---------------------|---|-------------------|--------|
| <b>Catalog No.</b>  | E-AB-63503                                  | <b>Reactivity</b> | H,M,R  |
| <b>Storage</b>      | Store at -20°C. Avoid freeze / thaw cycles. | <b>Host</b>       | Rabbit |
| <b>Applications</b> | IF  | <b>Isotype</b>    | IgG    |

**Note:** Centrifuge before opening to ensure complete recovery of vial contents.

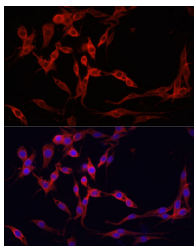
### Images



Immunofluorescence analysis of HeLa cells using YAP1 Polyclonal Antibody at dilution of 1:100 (40x lens). Blue: DAPI for nuclear staining.



Immunofluorescence analysis of NIH-3T3 cells using YAP1 Polyclonal Antibody at dilution of 1:100 (40x lens). Blue: DAPI for nuclear staining.



Immunofluorescence analysis of PC-12 cells using YAP1 Polyclonal Antibody at dilution of 1:100 (40x lens). Blue: DAPI for nuclear staining.

### Immunogen Information

|                  |  |
|------------------|--|
| <b>Immunogen</b> | Recombinant fusion protein of human YAP1 (NP_001123617.1). |
| <b>GeneID</b>    | 10413  |
| <b>Swissprot</b> | P46937   |
| <b>Synonyms</b>  | COB1, YAP, YAP2, YAP65, YKI, YAP1                          |

### Product Information

|                 |   |
|-----------------|---|
| <b>Buffer</b>   | PBS with 0.02% sodium azide, 50% glycerol, pH7.3. |
| <b>Purify</b>   | Affinity purification                             |
| <b>Dilution</b> | IF 1:50-1:200                                     |

### Background

This gene encodes a downstream nuclear effector of the Hippo signaling pathway which is involved in development, growth, repair, and homeostasis. This gene is known to play a role in the development and progression of multiple cancers as a transcriptional regulator of this signaling pathway and may function as a potential target for cancer treatment. Alternative splicing results in multiple transcript variants encoding different isoforms.

#### For Research Use Only

Thank you for your recent purchase.  
 If you would like to learn more about antibodies, please visit [www.elabscience.com](http://www.elabscience.com).

**Focus on your research  
 Service for life science**

Applications: WB-Western Blot IHC-Immunohistochemistry IF-Immunofluorescence IP-Immunoprecipitation FC-Flow cytometry ChIP-Chromatin Immunoprecipitation Reactivity: H-Human R-Rat M-Mouse Mk-Monkey Dg-Dog Ch-Chicken Hm-Hamster Rb-Rabbit Sh-Sheep Pg-Pig Z-Zebrafish X-Xenopus C-Cow.