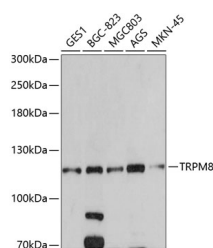


TRPM8 Polyclonal Antibody

Catalog No.	E-AB-63819	Reactivity	H
Storage	Store at -20°C. Avoid freeze / thaw cycles.	Host	Rabbit
Applications	WB	Isotype	IgG

Note: Centrifuge before opening to ensure complete recovery of vial contents.

Images



Western blot analysis of extracts of various cell lines using TRPM8 Polyclonal Antibody at dilution of 1:500.

Immunogen Information

Immunogen	Recombinant fusion protein of human TRPM8 (NP_076985.4).
GeneID	79054
Swissprot	Q7Z2W7
Synonyms	TRPM8,LTRPC6,TRPP8

Product Information

Calculated MW	5kDa/18kDa/79kDa/127kDa
Observed MW	126kDa
Buffer	PBS with 0.02% sodium azide, 50% glycerol, pH7.3.
Purify	Affinity purification
Dilution	WB 1:500-1:2000

Background

TRPM8 (Transient Receptor Potential Cation Channel Subfamily M Member 8) is a Protein Coding gene. Diseases associated with TRPM8 include Migraine Without Aura and Dentin Sensitivity. Among its related pathways are CREB Pathway and TRP channels. Gene Ontology (GO) annotations related to this gene include protein homodimerization activity and calcium channel activity. An important paralog of this gene is TRPM2.

For Research Use Only

Thank you for your recent purchase.
 If you would like to learn more about antibodies, please visit www.elabscience.com.

**Focus on your research
 Service for life science**

Applications: WB-Western Blot IHC-Immunohistochemistry IF-Immunofluorescence IP-Immunoprecipitation FC-Flow cytometry ChIP-Chromatin Immunoprecipitation Reactivity: H-Human R-Rat M-Mouse Mk-Monkey Dg-Dog Ch-Chicken Hm-Hamster Rb-Rabbit Sh-Sheep Pg-Pig Z-Zebrafish X-Xenopus C-Cow.