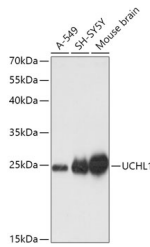


## UCHL1 Polyclonal Antibody

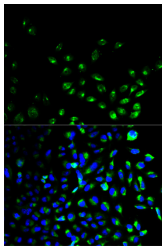
<b>Catalog No.</b>	E-AB-63992	<b>Reactivity</b>	H,M
<b>Storage</b>	Store at -20°C. Avoid freeze / thaw cycles.	<b>Host</b>	Rabbit
<b>Applications</b>	WB,IF	<b>Isotype</b>	IgG

**Note:** Centrifuge before opening to ensure complete recovery of vial contents.

### Images



Western blot analysis of extracts of various cell lines using UCHL1 Polyclonal Antibody at dilution of 1:1000.



Immunofluorescence analysis of HeLa cells using UCHL1 Polyclonal Antibody

### Immunogen Information

**Immunogen** Recombinant fusion protein of human UCHL1 (NP\_004172.2).

**GeneID** 7345

**Swissprot** P09936

**Synonyms** HEL-117,HEL-S-53,NDGOA,PARK5,PGP9.5,PGP9.5,PGP95,SPG79,Uch-L1,UCHL1

### Product Information

**Calculated MW** 24kDa

**Observed MW** 25kDa

**Buffer** PBS with 0.02% sodium azide, 50% glycerol, pH7.3.

**Purify** Affinity purification

**Dilution** WB 1:500-1:2000 IF 1:50-1:200

### Background

The protein encoded by this gene belongs to the peptidase C12 family. This enzyme is a thiol protease that hydrolyzes a peptide bond at the C-terminal glycine of ubiquitin. This gene is specifically expressed in the neurons and in cells of the diffuse neuroendocrine system. Mutations in this gene may be associated with Parkinson disease.

#### For Research Use Only

Thank you for your recent purchase.

If you would like to learn more about antibodies, please visit [www.elabscience.com](http://www.elabscience.com).

**Focus on your research  
 Service for life science**

Applications:WB-Western Blot IHC-Immunohistochemistry IF-Immunofluorescence IP-Immunoprecipitation FC-Flow cytometry ChIP-Chromatin Immunoprecipitation Reactivity: H-Human R-Rat M-Mouse Mk-Monkey Dg-Dog Ch-Chicken Hm-Hamster Rb-Rabbit Sh-Sheep Pg-Pig Z-Zebrafish X-Xenopus C-Cow.