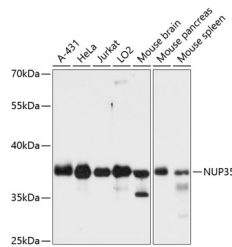


## NUP35 Polyclonal Antibody

<b>Catalog No.</b>	E-AB-64319	<b>Reactivity</b>	H,M,R
<b>Storage</b>	Store at -20°C. Avoid freeze / thaw cycles.	<b>Host</b>	Rabbit
<b>Applications</b>	WB	<b>Isotype</b>	IgG

**Note:** Centrifuge before opening to ensure complete recovery of vial contents.

### Images



Western blot analysis of extracts of various cell lines using NUP35 Polyclonal Antibody at dilution of 1:3000.

### Immunogen Information

<b>Immunogen</b>	Recombinant fusion protein of human NUP35 (NP_612142.2).
<b>GeneID</b>	129401
<b>Swissprot</b>	Q8NFH5
<b>Synonyms</b>	NUP35,MP-44,MP44,NP44,NUP53

### Product Information

<b>Calculated MW</b>	21kDa/33kDa/34kDa
<b>Observed MW</b>	37kDa
<b>Buffer</b>	PBS with 0.02% sodium azide, 50% glycerol, pH7.3.
<b>Purify</b>	Affinity purification
<b>Dilution</b>	WB 1:500-1:2000

### Background

This gene encodes a member of the nucleoporin family. The encoded protein contains two membrane binding regions, is localized to the nuclear rim, and is part of the nuclear pore complex. All molecules entering or leaving the nucleus either diffuse through or are actively transported by the nuclear pore complex. Alternative splicing results in multiple transcript variants. Pseudogenes of this gene have been defined on chromosomes 7 and 10.

#### For Research Use Only

Thank you for your recent purchase.  
 If you would like to learn more about antibodies, please visit [www.elabscience.com](http://www.elabscience.com).

**Focus on your research  
 Service for life science**

Applications:WB-Western Blot IHC-Immunohistochemistry IF-Immunofluorescence IP-Immunoprecipitation FC-Flow cytometry ChIP-Chromatin Immunoprecipitation Reactivity: H-Human R-Rat M-Mouse Mk-Monkey Dg-Dog Ch-Chicken Hm-Hamster Rb-Rabbit Sh-Sheep Pg-Pig Z-Zebrafish X-Xenopus C-Cow.