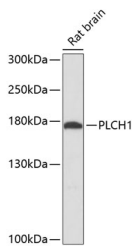


## PLCH1 Polyclonal Antibody

<b>Catalog No.</b>	E-AB-64369	<b>Reactivity</b>	R
<b>Storage</b>	Store at -20°C. Avoid freeze / thaw cycles.	<b>Host</b>	Rabbit
<b>Applications</b>	WB	<b>Isotype</b>	IgG

**Note:** Centrifuge before opening to ensure complete recovery of vial contents.

### Images



Western blot analysis of extracts of Rat brain using PLCH1 Polyclonal Antibody at dilution of 1:3000.

### Immunogen Information

<b>Immunogen</b>	Recombinant fusion protein of human PLCH1 (NP_055811.1).
<b>GeneID</b>	23007
<b>Swissprot</b>	Q4KWH8
<b>Synonyms</b>	PLCH1,PLCL3

### Product Information

<b>Calculated MW</b>	114kDa/115kDa/184kDa/189kDa
<b>Observed MW</b>	175kDa
<b>Buffer</b>	PBS with 0.02% sodium azide, 50% glycerol, pH7.3.
<b>Purify</b>	Affinity purification
<b>Dilution</b>	WB 1:1000-1:3000

### Background

PLCH1 is a member of the PLC-eta family of the phosphoinositide-specific phospholipase C (PLC) superfamily of enzymes that cleave phosphatidylinositol 4,5-bisphosphate (PtdIns(4,5)P<sub>2</sub>) to generate second messengers inositol 1,4,5-trisphosphate (IP<sub>3</sub>) and diacylglycerol (DAG).

### For Research Use Only

Thank you for your recent purchase.

If you would like to learn more about antibodies, please visit [www.elabscience.com](http://www.elabscience.com).

**Focus on your research  
Service for life science**

Applications:WB-Western Blot IHC-Immunohistochemistry IF-Immunofluorescence IP-Immunoprecipitation FC-Flow cytometry ChIP-Chromatin Immunoprecipitation Reactivity: H-Human R-Rat M-Mouse Mk-Monkey Dg-Dog Ch-Chicken Hm-Hamster Rb-Rabbit Sh-Sheep Pg-Pig Z-Zebrafish X-Xenopus C-Cow.