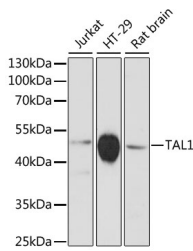


TAL1 Polyclonal Antibody

Catalog No.	E-AB-64380	Reactivity	H,R
Storage	Store at -20°C. Avoid freeze / thaw cycles.	Host	Rabbit
Applications	WB	Isotype	IgG

Note: Centrifuge before opening to ensure complete recovery of vial contents.

Images



Western blot analysis of extracts of various cell lines using TAL1 Polyclonal Antibody at dilution of 1:3000.

Immunogen Information

Immunogen	Recombinant fusion protein of human TAL1 (NP_003180.1).
GeneID	6886
Swissprot	P17542
Synonyms	TAL1,SCL,TCL5,bHLHa17,tal-1

Product Information

Calculated MW	16kDa/31kDa/34kDa
Observed MW	50kDa
Buffer	PBS with 0.02% sodium azide, 50% glycerol, pH7.3.
Purify	Affinity purification
Dilution	WB 1:500-1:2000

Background

TAL1 (TAL BHLH Transcription Factor 1, Erythroid Differentiation Factor) is a Protein Coding gene. Diseases associated with TAL1 include Leukemia, Acute Lymphoblastic and T-Cell Acute Lymphocytic Leukemia-1. Among its related pathways are NF-kappaB Signaling and MAPK-Erk Pathway. GO annotations related to this gene include transcription factor activity, sequence-specific DNA binding and chromatin binding. An important paralog of this gene is LYL1.

For Research Use Only

Thank you for your recent purchase.
 If you would like to learn more about antibodies, please visit www.elabscience.com.

**Focus on your research
 Service for life science**

Applications:WB-Western Blot IHC-Immunohistochemistry IF-Immunofluorescence IP-Immunoprecipitation FC-Flow cytometry ChIP-Chromatin Immunoprecipitation Reactivity: H-Human R-Rat M-Mouse Mk-Monkey Dg-Dog Ch-Chicken Hm-Hamster Rb-Rabbit Sh-Sheep Pg-Pig Z-Zebrafish X-Xenopus C-Cow.