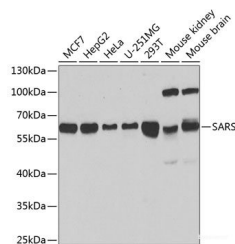


SARS Polyclonal Antibody

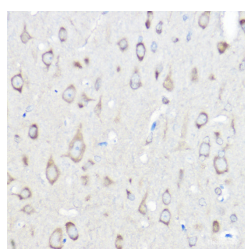
Catalog No.	E-AB-64576	Reactivity	H,M,R
Storage	Store at -20°C. Avoid freeze / thaw cycles.	Host	Rabbit
Applications	WB,IHC	Isotype	IgG

Note: Centrifuge before opening to ensure complete recovery of vial contents.

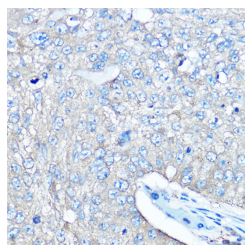
Images



Western blot analysis of extracts of various cell lines using SARS Polyclonal Antibody at 1:1000 dilution.



Immunohistochemistry of paraffin-embedded rat brain using SARS Polyclonal Antibody at dilution of 1:100 (40x lens). Perform high pressure antigen retrieval with 10 mM citrate buffer pH 6.0 before commencing with IHC staining protocol.



Immunohistochemistry of paraffin-embedded human lung cancer using SARS Polyclonal antibody at dilution of 1:100 (40x lens). Perform high

Immunogen Information

Immunogen	Recombinant fusion protein of human SARS
GeneID	6301
Swissprot	P49591
Synonyms	SARS, SERRS, SERS

Product Information

Calculated MW	58kDa
Observed MW	59kDa
Buffer	PBS with 0.02% sodium azide, 50% glycerol, pH 7.3.
Purify	Affinity purification
Dilution	WB 1:500-1:2000, IHC 1:50-1:200

Background

This gene belongs to the class II amino-acyl tRNA family. The encoded enzyme catalyzes the transfer of L-serine to tRNA (Ser) and is related to bacterial and yeast counterparts. Multiple alternatively spliced transcript variants have been described but the biological validity of all variants is unknown.

For Research Use Only

Thank you for your recent purchase.
 If you would like to learn more about antibodies, please visit www.elabscience.com.

**Focus on your research
 Service for life science**

Applications: WB-Western Blot IHC-Immunohistochemistry IF-Immunofluorescence IP-Immunoprecipitation FC-Flow cytometry ChIP-Chromatin Immunoprecipitation Reactivity: H-Human R-Rat M-Mouse Mk-Monkey Dg-Dog Ch-Chicken Hm-Hamster Rb-Rabbit Sh-Sheep Pg-Pig Z-Zebrafish X-Xenopus C-Cow.

pressure antigen retrieval with 10 mM
citrate buffer pH 6.0 before
commencing with IHC staining
protocol.

For Research Use Only

Thank you for your recent purchase.

If you would like to learn more about antibodies, please visit www.elabscience.com.

**Focus on your research
Service for life science**

Applications:WB-Western Blot IHC-Immunohistochemistry IF-Immunofluorescence IP-Immunoprecipitation FC-Flow cytometry CHIP-
Chromatin Immunoprecipitation Reactivity: H-Human R-Rat M-Mouse Mk-Monkey Dg-Dog Ch-Chicken Hm-Hamster Rb-Rabbit Sh-
Sheep Pg-Pig Z-Zebrafish X-Xenopus C-Cow.