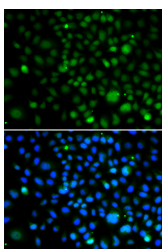


## KLF15 Polyclonal Antibody

|                     |                                             |                   |        |
|---------------------|---------------------------------------------|-------------------|--------|
| <b>Catalog No.</b>  | E-AB-64625                                  | <b>Reactivity</b> | H      |
| <b>Storage</b>      | Store at -20°C. Avoid freeze / thaw cycles. | <b>Host</b>       | Rabbit |
| <b>Applications</b> | IF                                          | <b>Isotype</b>    | IgG    |

**Note:** Centrifuge before opening to ensure complete recovery of vial contents.

### Images



Immunofluorescence analysis of A549 cells using KLF15 Polyclonal Antibody

### Immunogen Information

|                  |                                                          |
|------------------|----------------------------------------------------------|
| <b>Immunogen</b> | Recombinant fusion protein of human KLF15 (NP_054798.1). |
| <b>GeneID</b>    | 28999                                                    |
| <b>Swissprot</b> | Q9UIH9                                                   |
| <b>Synonyms</b>  | KLF15,KKLF                                               |

### Product Information

|                 |                                                   |
|-----------------|---------------------------------------------------|
| <b>Buffer</b>   | PBS with 0.02% sodium azide, 50% glycerol, pH7.3. |
| <b>Purify</b>   | Affinity purification                             |
| <b>Dilution</b> | IF 1:50-1:200                                     |

### Background

KLF15 (Kruppel Like Factor 15) is a Protein Coding gene. Diseases associated with KLF15 include Glomerular Disease and Aortic Aneurysm. Among its related pathways are Adipogenesis and BMAL1-CLOCK,NPAS2 activates circadian gene expression. Gene Ontology (GO) annotations related to this gene include DNA-binding transcription factor activity and proximal promoter DNA-binding transcription activator activity, RNA polymerase II-specific. An important paralog of this gene is KLF5.

#### For Research Use Only

Thank you for your recent purchase.  
 If you would like to learn more about antibodies, please visit [www.elabscience.com](http://www.elabscience.com).

**Focus on your research  
 Service for life science**

Applications:WB-Western Blot IHC-Immunohistochemistry IF-Immunofluorescence IP-Immunoprecipitation FC-Flow cytometry ChIP-Chromatin Immunoprecipitation Reactivity: H-Human R-Rat M-Mouse Mk-Monkey Dg-Dog Ch-Chicken Hm-Hamster Rb-Rabbit Sh-Sheep Pg-Pig Z-Zebrafish X-Xenopus C-Cow.