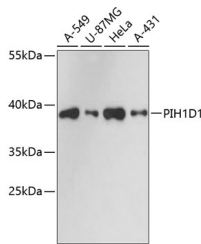


PIH1D1 Polyclonal Antibody

Catalog No.	E-AB-64806	Reactivity	H
Storage	Store at -20°C. Avoid freeze / thaw cycles.	Host	Rabbit
Applications	WB	Isotype	IgG

Note: Centrifuge before opening to ensure complete recovery of vial contents.

Images



Western blot analysis of extracts of various cell lines using PIH1D1 Polyclonal Antibody at dilution of 1:3000.

Immunogen Information

Immunogen	Recombinant fusion protein of human PIH1D1 (NP_060386.1).
GeneID	55011
Swissprot	Q9NWS0
Synonyms	PIH1D1,NOP17

Product Information

Calculated MW	19kDa/21kDa/32kDa
Observed MW	38kDa
Buffer	PBS with 0.02% sodium azide, 50% glycerol, pH7.3.
Purify	Affinity purification
Dilution	WB 1:500-1:2000

Background

Involved in the assembly of C/D box small nucleolar ribonucleoprotein (snoRNP) particles. Recruits the SWI/SNF complex to the core promoter of rRNA genes and enhances pre-rRNA transcription. Mediates interaction of TELO2 with the R2TP complex which is necessary for the stability of MTOR and SMG1. Positively regulates the assembly and activity of the mTORC1 complex.

For Research Use Only

Thank you for your recent purchase.
 If you would like to learn more about antibodies, please visit www.elabscience.com.

**Focus on your research
 Service for life science**

Applications:WB-Western Blot IHC-Immunohistochemistry IF-Immunofluorescence IP-Immunoprecipitation FC-Flow cytometry ChIP-Chromatin Immunoprecipitation Reactivity: H-Human R-Rat M-Mouse Mk-Monkey Dg-Dog Ch-Chicken Hm-Hamster Rb-Rabbit Sh-Sheep Pg-Pig Z-Zebrafish X-Xenopus C-Cow.