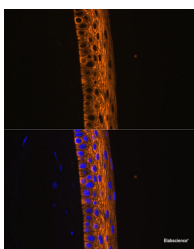


MYH13 Polyclonal Antibody

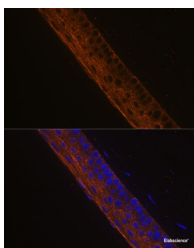
Catalog No.	E-AB-65053	Reactivity	M,R
Storage	Store at -20°C. Avoid freeze / thaw cycles.	Host	Rabbit
Applications	IF	Isotype	IgG

Note: Centrifuge before opening to ensure complete recovery of vial contents.

Images



Immunofluorescence analysis of Rat eye using MYH13 Polyclonal Antibody at dilution of 1:100 (40x lens). Blue: DAPI for nuclear staining.



Immunofluorescence analysis of Mouse eye using MYH13 Polyclonal Antibody at dilution of 1:100 (40x lens). Blue: DAPI for nuclear staining.

Immunogen Information

Immunogen	Recombinant fusion protein of human MYH13 (NP_003793.2).
GeneID	8735
Swissprot	Q9UKX3
Synonyms	MYH13,MyHC-IIL,MyHC-eo,myosin-13

Product Information

Buffer	PBS with 0.02% sodium azide, 50% glycerol, pH7.3.
Purify	Affinity purification
Dilution	IF 1:50-1:100

Background

MYH13 (Myosin Heavy Chain 13) is a Protein Coding gene. Diseases associated with MYH13 include Ventricular Tachycardia, Catecholaminergic Polymorphic, 1, With Or Without Atrial Dysfunction And/Or Dilated Cardiomyopathy. Among its related pathways are Actin Nucleation by ARP-WASP Complex and Cytoskeleton remodeling Regulation of actin cytoskeleton by Rho GTPases. Gene Ontology (GO) annotations related to this gene include actin binding and motor activity. An important paralog of this gene is MYH2.

For Research Use Only

Thank you for your recent purchase.
 If you would like to learn more about antibodies, please visit www.elabscience.com.

**Focus on your research
 Service for life science**

Applications:WB-Western Blot IHC-Immunohistochemistry IF-Immunofluorescence IP-Immunoprecipitation FC-Flow cytometry ChIP-Chromatin Immunoprecipitation Reactivity: H-Human R-Rat M-Mouse Mk-Monkey Dg-Dog Ch-Chicken Hm-Hamster Rb-Rabbit Sh-Sheep Pg-Pig Z-Zebrafish X-Xenopus C-Cow.