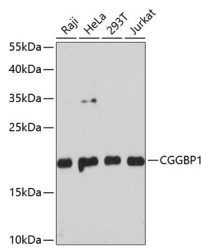


## CGGBP1 Polyclonal Antibody

<b>Catalog No.</b>	E-AB-65472	<b>Reactivity</b>	H
<b>Storage</b>	Store at -20°C. Avoid freeze / thaw cycles.	<b>Host</b>	Rabbit
<b>Applications</b>	WB	<b>Isotype</b>	IgG

**Note:** Centrifuge before opening to ensure complete recovery of vial contents.

### Images



Western blot analysis of extracts of various cell lines using CGGBP1 Polyclonal Antibody at dilution of 1:3000.

### Immunogen Information

<b>Immunogen</b>	Recombinant fusion protein of human CGGBP1 (NP_003654.3).
<b>GeneID</b>	8545
<b>Swissprot</b>	Q9UFW8
<b>Synonyms</b>	CGGBP1,CGGBP,p20-CGGBP

### Product Information

<b>Calculated MW</b>	18kDa
<b>Observed MW</b>	20kDa
<b>Buffer</b>	PBS with 0.02% sodium azide, 50% glycerol, pH7.3.
<b>Purify</b>	Affinity purification
<b>Dilution</b>	WB 1:500-1:2000

### Background

This gene encodes a CGG repeat-binding protein that primarily localizes to the nucleus. CGG trinucleotide repeats are implicated in many disorders as they often act as transcription- and translation-regulatory elements, can produce hairpin structures which cause DNA replication errors, and form regions prone to chromosomal breakage. CGG repeats are also targets for CpG methylation. In addition to its ability to bind CGG repeats and regulate transcription, this gene is believed to play a role in DNA damage repair and telomere protection. In vitro studies indicate this protein does not bind to methylated CpG sequences.

#### For Research Use Only

Thank you for your recent purchase.  
 If you would like to learn more about antibodies, please visit [www.elabscience.com](http://www.elabscience.com).

**Focus on your research  
 Service for life science**

Applications:WB-Western Blot IHC-Immunohistochemistry IF-Immunofluorescence IP-Immunoprecipitation FC-Flow cytometry ChIP-Chromatin Immunoprecipitation Reactivity: H-Human R-Rat M-Mouse Mk-Monkey Dg-Dog Ch-Chicken Hm-Hamster Rb-Rabbit Sh-Sheep Pg-Pig Z-Zebrafish X-Xenopus C-Cow.