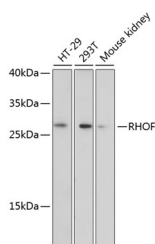


RHOF Polyclonal Antibody

Catalog No.	E-AB-65496	Reactivity	H,M
Storage	Store at -20°C. Avoid freeze / thaw cycles.	Host	Rabbit
Applications	WB	Isotype	IgG

Note: Centrifuge before opening to ensure complete recovery of vial contents.

Images



Western blot analysis of extracts of various cell lines using RHO Polyclonal Antibody at dilution of 1:3000.

Immunogen Information

Immunogen	Recombinant fusion protein of human RHO (NP_061907.2).
GeneID	54509
Swissprot	Q9HBH0
Synonyms	RHO,ARHF,RIF

Product Information

Calculated MW	18kDa/23kDa
Observed MW	27kDa
Buffer	PBS with 0.02% sodium azide, 50% glycerol, pH7.3.
Purify	Affinity purification
Dilution	WB 1:500-1:2000

Background

RHO (Ras Homolog Family Member F, Filopodia Associated) is a Protein Coding gene. Diseases associated with RHO include Deafness, Autosomal Recessive 104 and Ascariasis. Among its related pathways are Signaling by GPCR and Innate Immune System. Gene Ontology (GO) annotations related to this gene include GTP binding and GTPase activity. An important paralog of this gene is RHOD.

For Research Use Only

Thank you for your recent purchase.
 If you would like to learn more about antibodies, please visit www.elabscience.com.

**Focus on your research
 Service for life science**

Applications:WB-Western Blot IHC-Immunohistochemistry IF-Immunofluorescence IP-Immunoprecipitation FC-Flow cytometry ChIP-Chromatin Immunoprecipitation Reactivity: H-Human R-Rat M-Mouse Mk-Monkey Dg-Dog Ch-Chicken Hm-Hamster Rb-Rabbit Sh-Sheep Pg-Pig Z-Zebrafish X-Xenopus C-Cow.