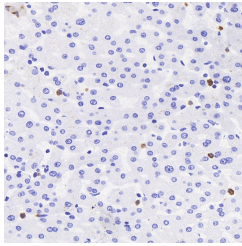


MPO Polyclonal Antibody

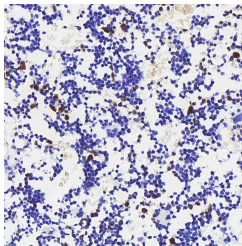
Catalog No.	E-AB-70091	Reactivity	H,M,R
Storage	Store at -20°C. Avoid freeze / thaw cycles.	Host	Rabbit
Applications	IHC,IF	Isotype	IgG

Note: Centrifuge before opening to ensure complete recovery of vial contents.

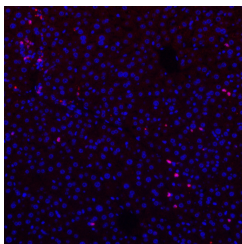
Images



Immunohistochemistry analysis of paraffin-embedded human liver using MPO Polyclonal Antibody at dilution of 1:300.



Immunohistochemistry analysis of paraffin-embedded mouse bone using MPO Polyclonal Antibody at dilution of 1:300.



Immunofluorescence analysis of paraffin-embedded human liver using MPO Polyclonal Antibody at dilution of 1:300.

Immunogen Information

Immunogen	KLH conjugated Synthetic peptide corresponding to Mouse MPO
Swissprot	P05164,P11247
Synonyms	MPO, myeloperoxidase

Product Information

Buffer	PBS with 0.02% sodium azide, 1% BSA and 50% glycerol, pH7.4
Purify	Affinity purification
Dilution	IHC 1:500-1:1000, IF 1:200-1:500

Background

Myeloperoxidase (MPO) is a heme protein synthesized during myeloid differentiation that constitutes the major component of neutrophil azurophilic granules. Produced as a single chain precursor, myeloperoxidase is subsequently cleaved into a light and heavy chain. The mature myeloperoxidase is a tetramer composed of 2 light chains and 2 heavy chains. This enzyme produces hypohalous acids central to the microbicidal activity of neutrophils.

For Research Use Only

Thank you for your recent purchase.
If you would like to learn more about antibodies, please visit www.elabscience.com.

**Focus on your research
Service for life science**

Applications:WB-Western Blot IHC-Immunohistochemistry IF-Immunofluorescence IP-Immunoprecipitation FC-Flow cytometry ChIP-Chromatin Immunoprecipitation Reactivity: H-Human R-Rat M-Mouse Mk-Monkey Dg-Dog Ch-Chicken Hm-Hamster Rb-Rabbit Sh-Sheep Pg-Pig Z-Zebrafish X-Xenopus C-Cow.