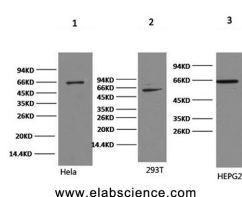


## NFκB-p65 Monoclonal Antibody

<b>Catalog No.</b>	E-AB-22016	<b>Reactivity</b>	H,M,R
<b>Storage</b>	Store at -20°C. Avoid freeze / thaw cycles.	<b>Host</b>	Mouse
<b>Applications</b>	WB,IHC-p,IP	<b>Isotype</b>	IgG

**Note:** Centrifuge before opening to ensure complete recovery of vial contents.

### Images



Western Blot analysis of 1) HeLa, 2) 293T, 3) HepG2 cells using NFκB-p65 Monoclonal Antibody at dilution of 1:2000.



Immunohistochemistry of paraffin-embedded Mouse hippocampus tissue using NFκB-p65 Monoclonal Antibody at dilution of 1:200.

### Immunogen Information

<b>Immunogen</b>	Synthetic Peptide
<b>Swissprot</b>	Q04206
<b>Synonyms</b>	RELA,NFKB3,Transcription factor p65,Nuclear factor NF-kappa-B p65 subunit,Nuclear factor of kappa light polypeptide gene enhancer in B-cells 3

### Product Information

<b>Calculated MW</b>	60kDa
<b>Observed MW</b>	65kDa
<b>Buffer</b>	PBS with 0.02% sodium azide and 50% glycerol pH 7.4.
<b>Purify</b>	Protein A purification
<b>Clone No.</b>	Clone:9B4
<b>Dilution</b>	WB 1:1000-3000, IHC 1:100-1:300, IP 1:100-1:300

### Background

Proteins encoded by the v-Rel viral oncogene and its cellular homolog, c-Rel, are members of a family of transcription factors that include the two subunits of the transcription factor NFκB (p50 and p65) and the Drosophila maternal morphogen, dorsal. Both proteins specifically bind to DNA sequences that are the same or slight variations of the 10 bp κB sequence in the immunoglobulin κ light chain enhancer. This same sequence is also present in a number of other cellular and viral enhancers. The DNA binding activity of NFκB is activated and NFκB is subsequently transported from the cytoplasm to the nucleus in cells exposed to mitogens or growth factors. cDNAs encoding precursors for two distinct proteins of the same size have been described, designated p105 and p100. The p105 precursor contains p50 at its N-terminus and a C-terminal region that when expressed as a separate molecule, designated pΔI, binds to p50 and regulates its activity.

#### For Research Use Only

Thank you for your recent purchase.  
 If you would like to learn more about antibodies, please visit [www.elabscience.com](http://www.elabscience.com).

**Focus on your research  
 Service for life science**

Applications:WB-Western Blot IHC-Immunohistochemistry IF-Immunofluorescence IP-Immunoprecipitation FC-Flow cytometry ChIP-Chromatin Immunoprecipitation Reactivity: H-Human R-Rat M-Mouse Mk-Monkey Dg-Dog Ch-Chicken Hm-Hamster Rb-Rabbit Sh-Sheep Pg-Pig Z-Zebrafish X-Xenopus C-Cow.