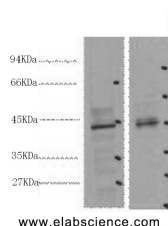


## CDX2 Monoclonal Antibody

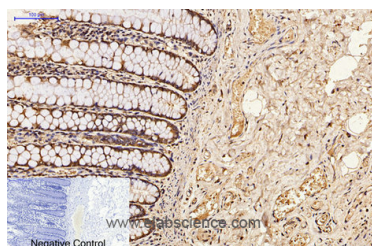
<b>Catalog No.</b>	E-AB-22020	<b>Reactivity</b>	H,M,R
<b>Storage</b>	Store at -20°C. Avoid freeze / thaw cycles.	<b>Host</b>	Mouse
<b>Applications</b>	WB,IHC-p,IF	<b>Isotype</b>	IgG

**Note:** Centrifuge before opening to ensure complete recovery of vial contents.

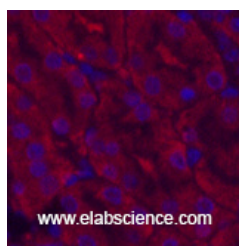
### Images



Western Blot analysis of 1) 293T, 2) Mouse heart using CDX2 Monoclonal Antibody at dilution of 1:2000.



Immunohistochemistry of paraffin-embedded Human colon tissue using CDX2 Monoclonal Antibody at dilution of 1:200.



Immunofluorescence analysis of Mouse kidney tissue using CDX2 Monoclonal Antibody at dilution of 1:200.

### Immunogen Information

<b>Immunogen</b>	Synthetic Peptide
<b>Swissprot</b>	Q99626
<b>Synonyms</b>	CDX2,CDX3,Homeobox protein CDX-2,CDX-3,Caudal-type homeobox protein 2

### Product Information

<b>Calculated MW</b>	34kDa
<b>Observed MW</b>	42kDa
<b>Buffer</b>	PBS with 0.02% sodium azide and 50% glycerol pH 7.4.
<b>Purify</b>	Protein A purification
<b>Clone No.</b>	Clone:1A5
<b>Dilution</b>	WB 1:500-1:2000, IHC 1:100-1:300, IF 1:100-1:300

### Background

This gene is a member of the caudal-related homeobox transcription factor gene family. The encoded protein is a major regulator of intestine-specific genes involved in cell growth and differentiation. This protein also plays a role in early embryonic development of the intestinal tract. Aberrant expression of this gene is associated with intestinal inflammation and tumorigenesis.

#### For Research Use Only

Thank you for your recent purchase.  
 If you would like to learn more about antibodies, please visit [www.elabscience.com](http://www.elabscience.com).

**Focus on your research  
 Service for life science**

Applications:WB-Western Blot IHC-Immunohistochemistry IF-Immunofluorescence IP-Immunoprecipitation FC-Flow cytometry ChIP-Chromatin Immunoprecipitation Reactivity: H-Human R-Rat M-Mouse Mk-Monkey Dg-Dog Ch-Chicken Hm-Hamster Rb-Rabbit Sh-Sheep Pg-Pig Z-Zebrafish X-Xenopus C-Cow.