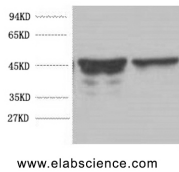


GFAP Monoclonal Antibody

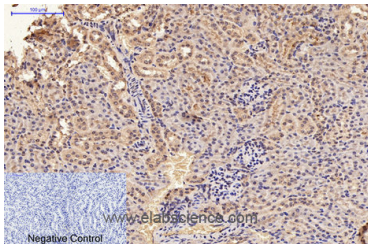
Catalog No.	E-AB-22022	Reactivity	M,R
Storage	Store at -20°C. Avoid freeze / thaw cycles.	Host	Mouse
Applications	WB,IHC-p,IF	Isotype	IgG

Note: Centrifuge before opening to ensure complete recovery of vial contents.

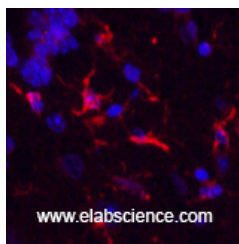
Images



Western Blot analysis of Rat brain using GFAP Monoclonal Antibody at dilution of 1:5000.



Immunohistochemistry of paraffin-embedded Mouse kidney tissue using GFAP Monoclonal Antibody at dilution of 1:200.



Immunofluorescence analysis of Mouse brain tissue using GFAP Monoclonal Antibody at dilution of 1:200.

Immunogen Information

Immunogen	Synthetic Peptide
Swissprot	P14136
Synonyms	GFAP,Glial fibrillary acidic protein,GFAP

Product Information

Calculated MW	50kDa
Observed MW	45kDa
Buffer	PBS with 0.02% sodium azide and 50% glycerol pH 7.4.
Purify	Protein A purification
Clone No.	Clone:3H1
Dilution	WB 1:500-1:5000, IHC 1:50-1:300, IF 1:100-1:300

Background

This gene encodes one of the major intermediate filament proteins of mature astrocytes. It is used as a marker to distinguish astrocytes from other glial cells during development. Mutations in this gene cause Alexander disease, a rare disorder of astrocytes in the central nervous system. Alternative splicing results in multiple transcript variants encoding distinct isoforms.

For Research Use Only

Thank you for your recent purchase.
 If you would like to learn more about antibodies, please visit www.elabscience.com.

**Focus on your research
 Service for life science**

Applications:WB-Western Blot IHC-Immunohistochemistry IF-Immunofluorescence IP-Immunoprecipitation FC-Flow cytometry ChIP-Chromatin Immunoprecipitation Reactivity: H-Human R-Rat M-Mouse Mk-Monkey Dg-Dog Ch-Chicken Hm-Hamster Rb-Rabbit Sh-Sheep Pg-Pig Z-Zebrafish X-Xenopus C-Cow.