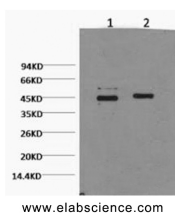


## CASP9 Monoclonal Antibody

<b>Catalog No.</b>	E-AB-22035	<b>Reactivity</b>	H
<b>Storage</b>	Store at -20°C. Avoid freeze / thaw cycles.	<b>Host</b>	Mouse
<b>Applications</b>	WB,IHC-p,IF,IP	<b>Isotype</b>	IgG

**Note:** Centrifuge before opening to ensure complete recovery of vial contents.

### Images



Western Blot analysis of HeLa cells using CASP9 Monoclonal Antibody at dilution of 1) 1:2000 2) 1:5000.

### Immunogen Information

<b>Immunogen</b>	Synthetic Peptide
<b>Swissprot</b>	P55211
<b>Synonyms</b>	CASP9,MCH6,Caspase-9,CASP-9,Apoptotic protease Mch-6,Apoptotic protease-activating factor 3,APAF-3,ICE-like apoptotic protease 6,ICE-LAP6

### Product Information

<b>Calculated MW</b>	46kDa
<b>Observed MW</b>	47-51kDa
<b>Buffer</b>	PBS with 0.02% sodium azide and 50% glycerol pH 7.4.
<b>Purify</b>	Protein A purification
<b>Clone No.</b>	Clone:3I3
<b>Dilution</b>	WB 1:500-1:2000, IHC 1:50-300, IF 1:50-1:200, IP 1:100-1:300

### Background

Involved in the activation cascade of caspases responsible for apoptosis execution. Binding of caspase-9 to Apaf-1 leads to activation of the protease which then cleaves and activates caspase-3. Proteolytically cleaves poly(ADP-ribose) polymerase (PARP). Isoform 2 lacks activity is an dominant-negative inhibitor of caspase-9.

#### For Research Use Only

Thank you for your recent purchase.

If you would like to learn more about antibodies, please visit [www.elabscience.com](http://www.elabscience.com).

**Focus on your research  
 Service for life science**

Applications: WB-Western Blot IHC-Immunohistochemistry IF-Immunofluorescence IP-Immunoprecipitation FC-Flow cytometry ChIP-Chromatin Immunoprecipitation Reactivity: H-Human R-Rat M-Mouse Mk-Monkey Dg-Dog Ch-Chicken Hm-Hamster Rb-Rabbit Sh-Sheep Pg-Pig Z-Zebrafish X-Xenopus C-Cow.