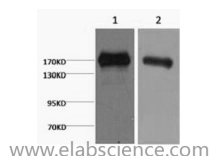


EGFR Monoclonal Antibody

| | | | |
|---------------------|---|-------------------|-------|
| Catalog No. | E-AB-22075 | Reactivity | H |
| Storage | Store at -20°C. Avoid freeze / thaw cycles. | Host | Mouse |
| Applications | WB | Isotype | IgG |

Note: Centrifuge before opening to ensure complete recovery of vial contents.

Images



Western Blot analysis of 1) A431, 2) Hela cells using EGFR Monoclonal Antibody at dilution of 1:2000.

Immunogen Information

| | |
|------------------|---|
| Immunogen | Synthetic Peptide |
| Swissprot | P00533 |
| Synonyms | EGFR,ERBB,ERBB1,HER1,Epidermal growth factor receptor,Proto-oncogene c-ErbB-1,Receptor tyrosine-protein kinase erbB-1 |

Product Information

| | |
|----------------------|--|
| Calculated MW | 134kDa |
| Observed MW | 170kDa |
| Buffer | PBS with 0.02% sodium azide and 50% glycerol pH 7.4. |
| Purify | Protein A purification |
| Clone No. | Clone:5F3 |
| Dilution | WB 1:1000-3000 |

Background

Receptor tyrosine kinase binding ligands of the EGF family and activating several signaling cascades to convert extracellular cues into appropriate cellular responses. Known ligands include EGF, TGFA/TGF-alpha, amphiregulin, epigen/EPGN, BTC/betacellulin, epiregulin/EREG and HBEGF/heparin-binding EGF. Ligand binding triggers receptor homo- and/or heterodimerization and autophosphorylation on key cytoplasmic residues. The phosphorylated receptor recruits adapter proteins like GRB2 which in turn activates complex downstream signaling cascades. Activates at least 4 major downstream signaling cascades including the RAS-RAF-MEK-ERK, PI3 kinase-AKT, PLCgamma-PKC and STATs modules. May also activate the NF-kappa-B signaling cascade. Also directly phosphorylates other proteins like RGS16, activating its GTPase activity and probably coupling the EGF receptor signaling to the G protein-coupled receptor signaling. Also phosphorylates MUC1 and increases its interaction with SRC and CTNNB1/beta-catenin. Isoform 2 may act as an antagonist of EGF action.

For Research Use Only

Thank you for your recent purchase.
 If you would like to learn more about antibodies, please visit www.elabscience.com.

**Focus on your research
 Service for life science**

Applications:WB-Western Blot IHC-Immunohistochemistry IF-Immunofluorescence IP-Immunoprecipitation FC-Flow cytometry ChIP-Chromatin Immunoprecipitation Reactivity: H-Human R-Rat M-Mouse Mk-Monkey Dg-Dog Ch-Chicken Hm-Hamster Rb-Rabbit Sh-Sheep Pg-Pig Z-Zebrafish X-Xenopus C-Cow.