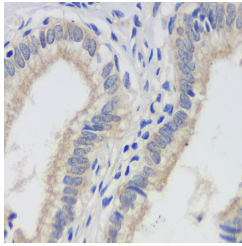


FAS Monoclonal Antibody

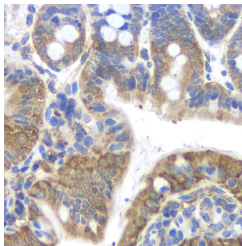
| | | | |
|---------------------|---|-------------------|-------|
| Catalog No. | E-AB-70174 | Reactivity | H,M |
| Storage | Store at -20°C. Avoid freeze / thaw cycles. | Host | Mouse |
| Applications | IHC | Isotype | IgG |

Note: Centrifuge before opening to ensure complete recovery of vial contents.

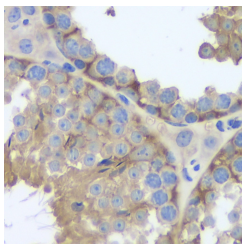
Images



Immunohistochemistry analysis of paraffin-embedded human gallbladder using FAS Monoclonal Antibody at dilution of 1:200.



Immunohistochemistry analysis of paraffin-embedded mouse colon using FAS Monoclonal Antibody at dilution of 1:200.



Immunohistochemistry analysis of paraffin-embedded mouse testis using FAS Monoclonal Antibody at dilution of 1:200.

Immunogen Information

| | |
|------------------|--|
| Immunogen | KLH conjugated Synthetic peptide corresponding to Mouse FAS |
| Swissprot | P25445,P25446 |
| Synonyms | ALPS 1A,TNF receptor superfamily,member 6,TNR6,Tumor necrosis factor receptor superfamily member 6 |

Product Information

| | |
|------------------|---|
| Buffer | PBS with 0.02% sodium azide, 1% BSA and 50% glycerol, pH7.4 |
| Purify | Affinity purification |
| Clone No. | 10E5B10 |
| Dilution | IHC 1:200-1:800 |

Background

FAS,also named as CD95,APO-1,APT1,FAS1 and TNFRSF6,is a receptor for TNFSF6/FASLG. It is a cell surface receptor belonging to the TNF receptor superfamily,can mediate apoptosis by ligation with an agonistic anti-Fas antibody or Fas ligand. Stimulation of Fas results in the aggregation of its intracellular death domains,leading to the formation of the death-inducing signaling complex (DISC). FAS-mediated apoptosis may have a role in the induction of peripheral tolerance,in the antigen-stimulated suicide of mature T-cells,or both. The secreted isoforms 2 to 6 block apoptosis (in vitro). This anti-Fas monoclonal antibody can be used to induce apoptosis in cell cultures through Fas by imitating the Fas-ligand.

For Research Use Only

Thank you for your recent purchase.
 If you would like to learn more about antibodies,please visit www.elabscience.com.

**Focus on your research
 Service for life science**

Applications:WB-Western Blot IHC-Immunohistochemistry IF-Immunofluorescence IP-Immunoprecipitation FC-Flow cytometry ChIP-Chromatin Immunoprecipitation Reactivity: H-Human R-Rat M-Mouse Mk-Monkey Dg-Dog Ch-Chicken Hm-Hamster Rb-Rabbit Sh-Sheep Pg-Pig Z-Zebrafish X-Xenopus C-Cow.